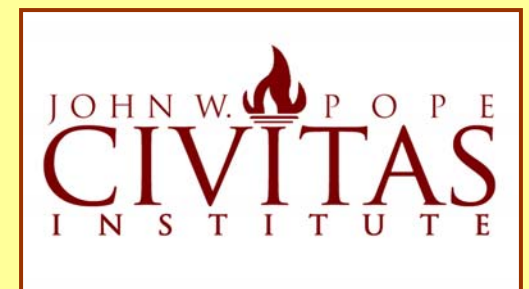
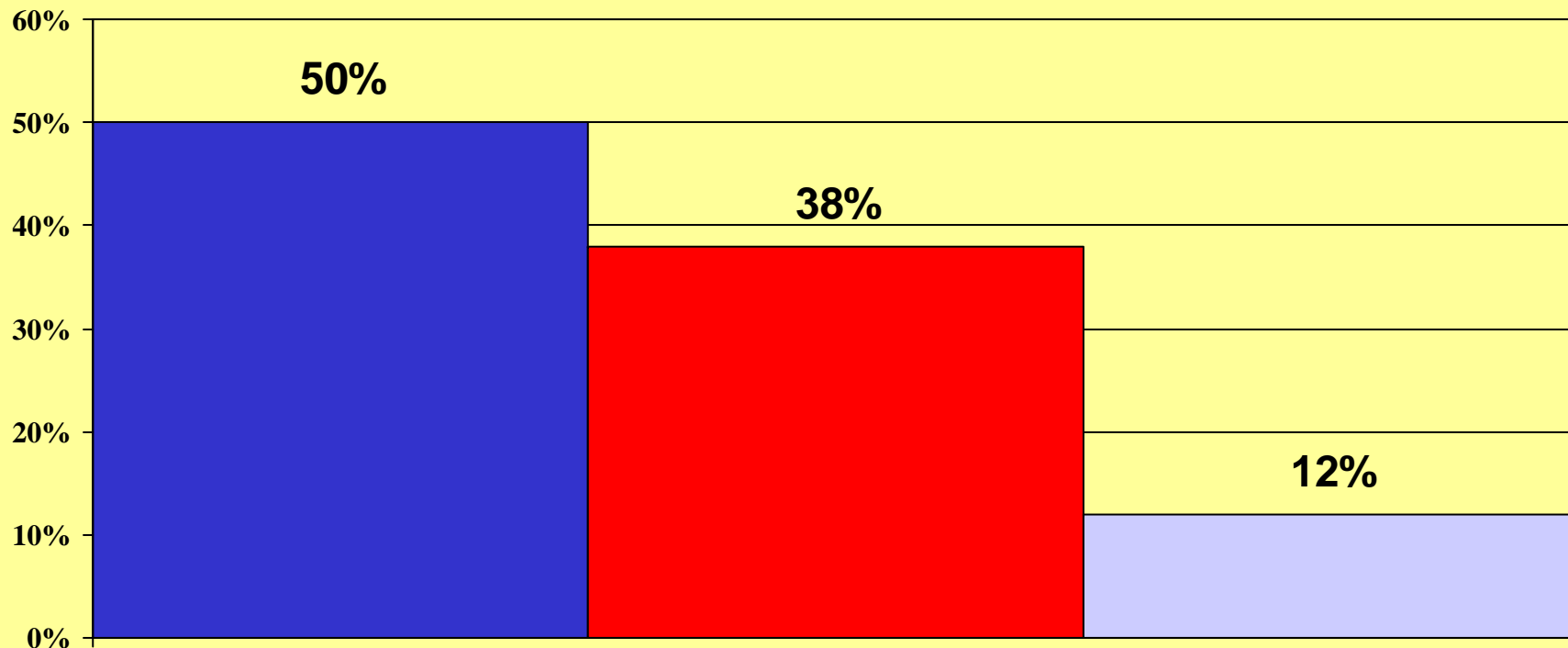


CIVITAS INSTITUTE
DECISION **M**AKER
P O L L

October 2007
CIVITAS INSTITUTE



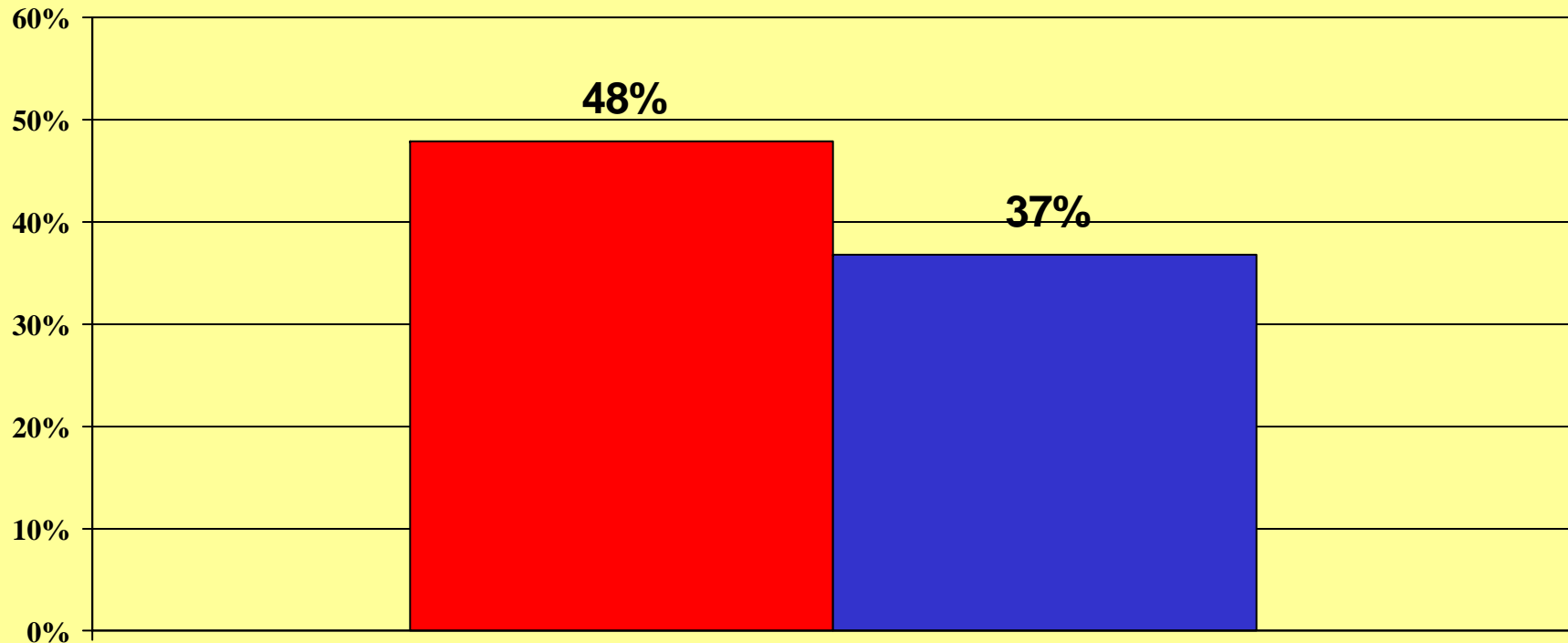
Affiliation



October 2007

■ Democrat ■ Republican ■ Other

Do you feel things in North Carolina are generally headed in the right direction or have gotten off on the wrong track?





October 2007

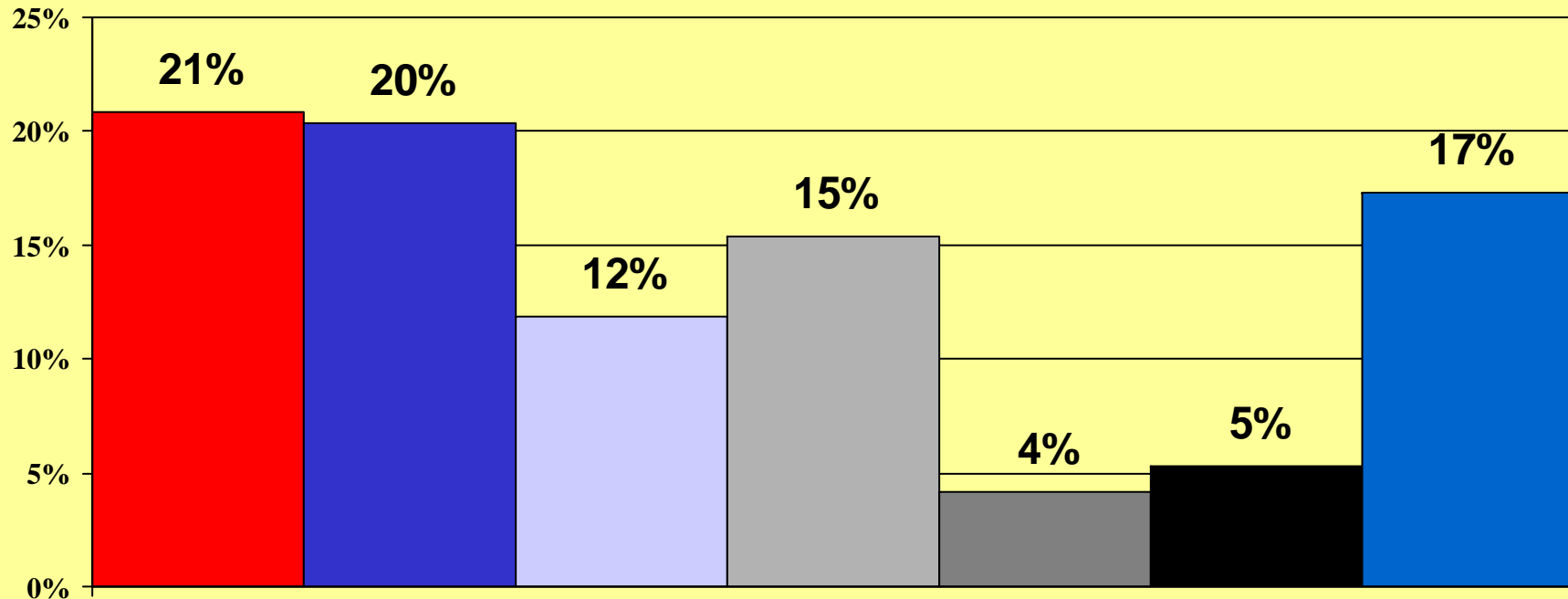
■ Right direction ■ Wrong track

CIVITAS INSTITUTE

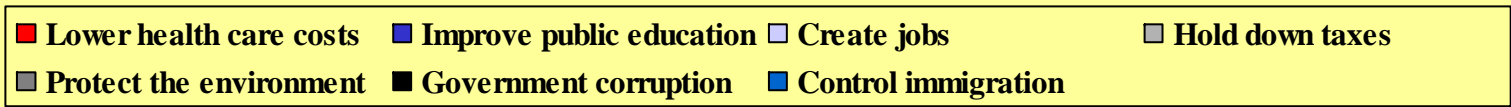
Right Track vs. Wrong Direction

September	October
Right Track	Right Track
42	48 
Wrong Direction	Wrong Direction
41	37 

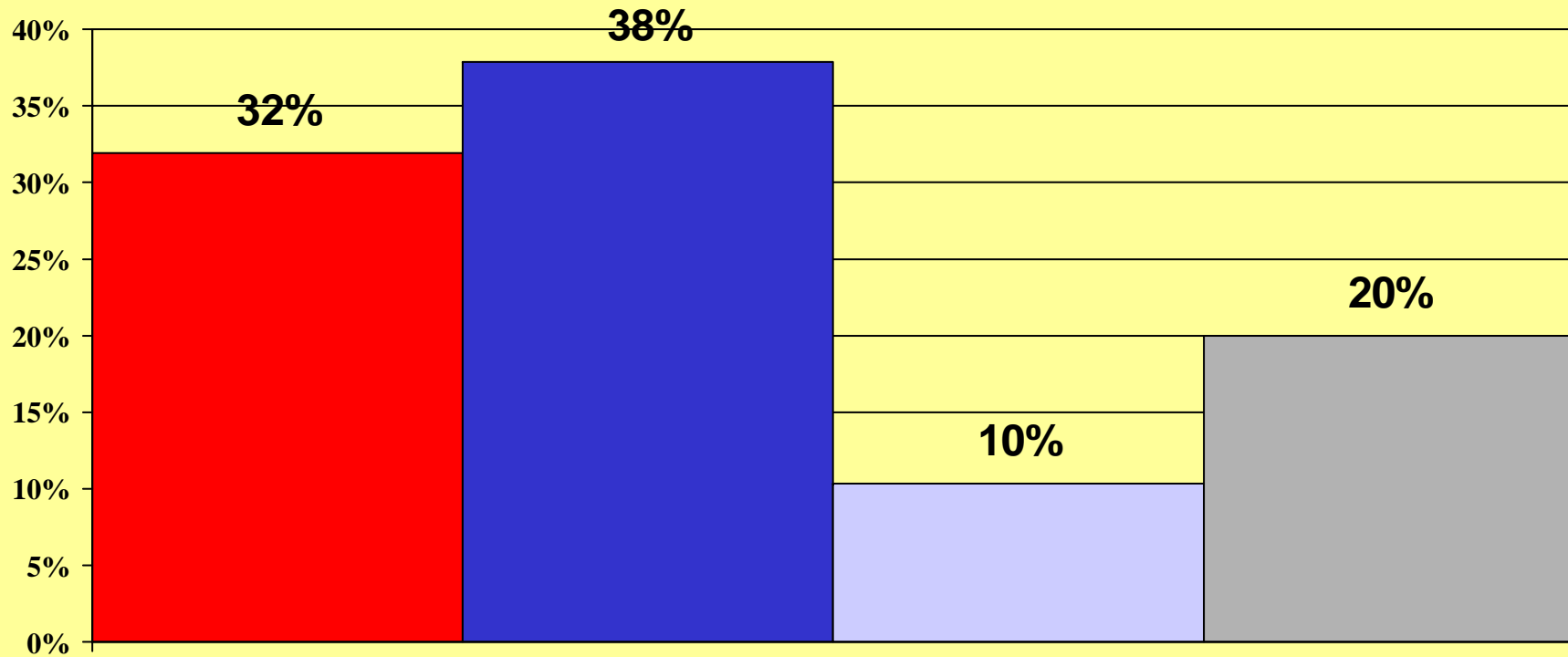
Which of the following issues or programs needs the most attention from State government:



October 2007



If the election for State Legislature were held today, would you be voting:



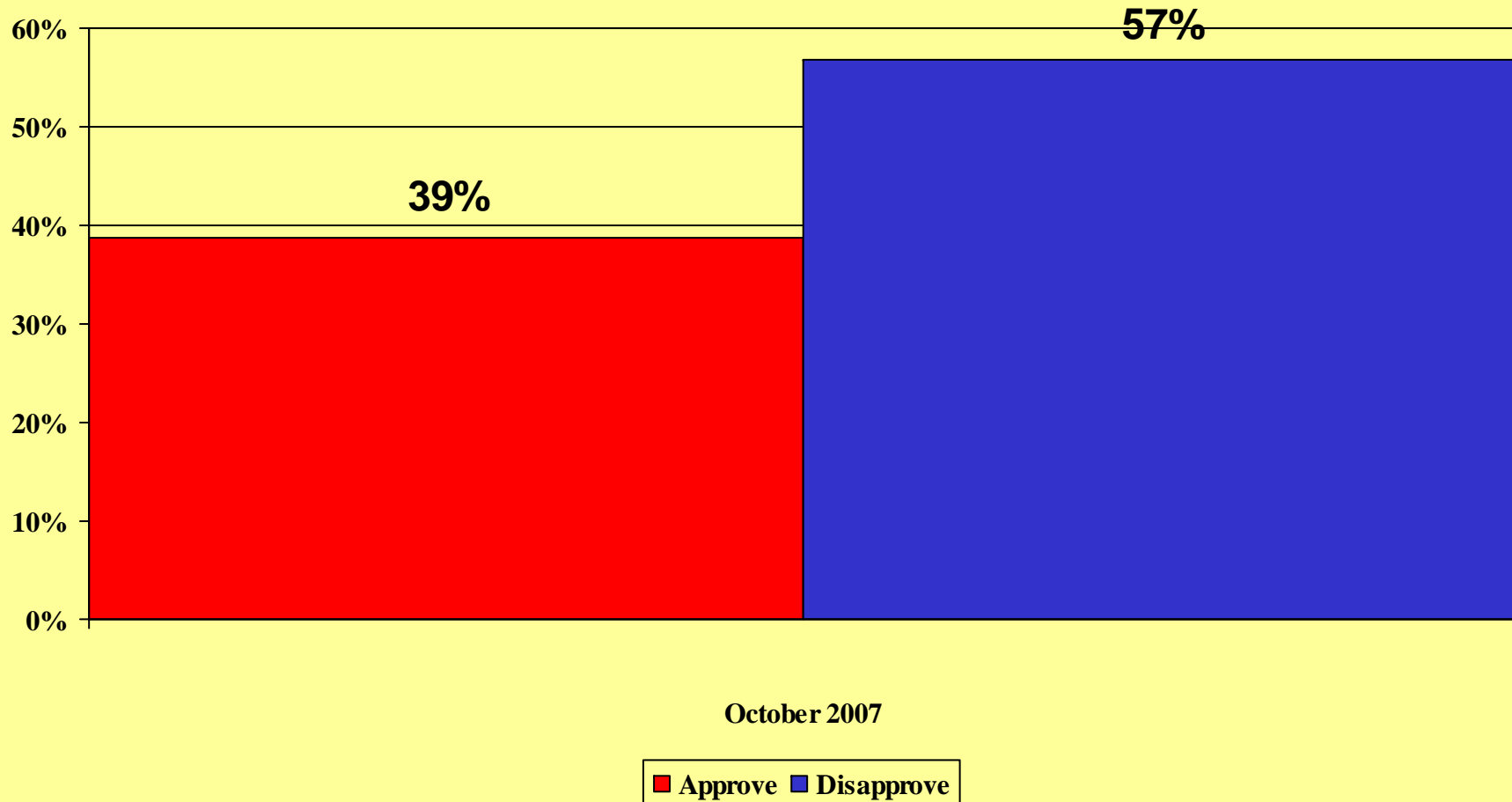
October 2007

■ Republican ■ Democratic ■ Neither ■ Not sure

N.C. Legislature

September	October
Democratic	Democratic
36	38 ↑
Republican	Republican
32	32

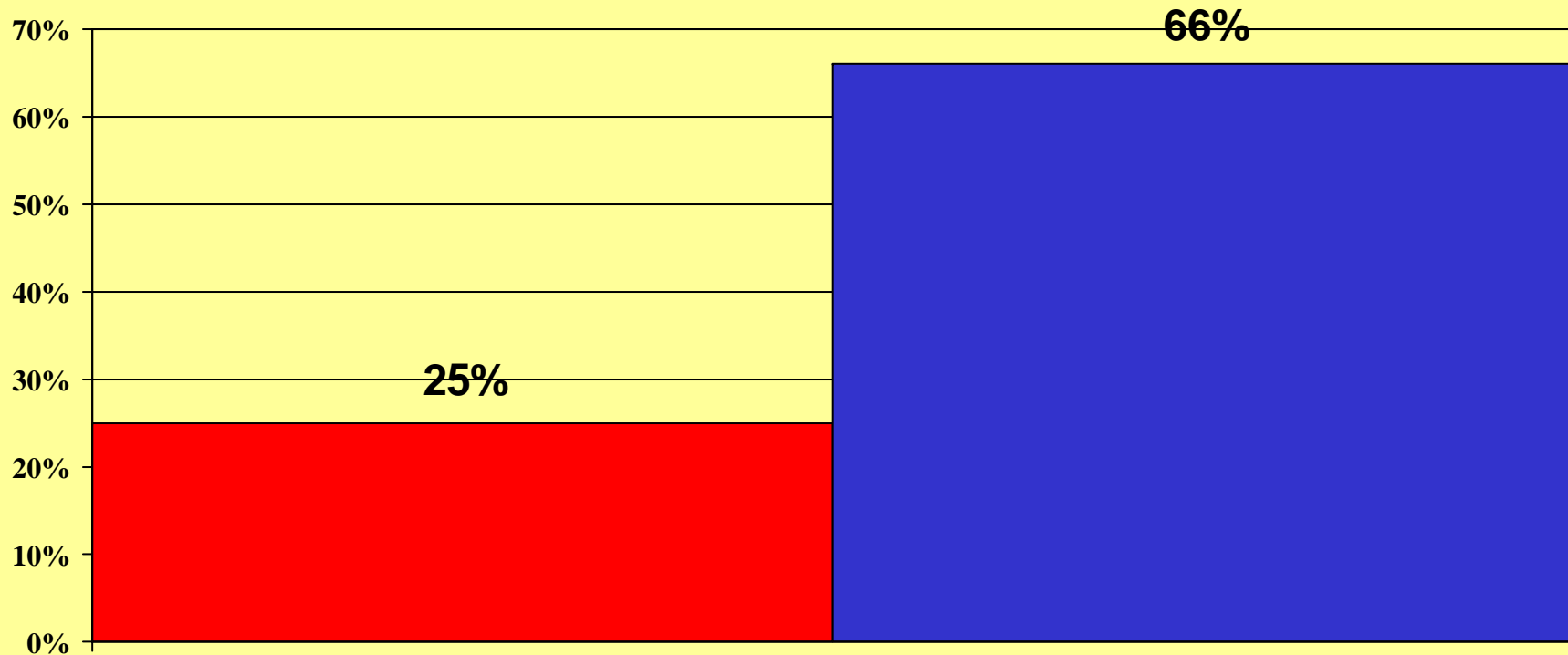
Thinking about national issues, do you approve or disapprove of the job George W. Bush is doing as President?



Bush Approval – N.C.

September	October
Approve	Approve
43	39 ↓
Disapprove	Disapprove
52	57 ↑

Do you approve or disapprove of the job Congress is doing?



October 2007

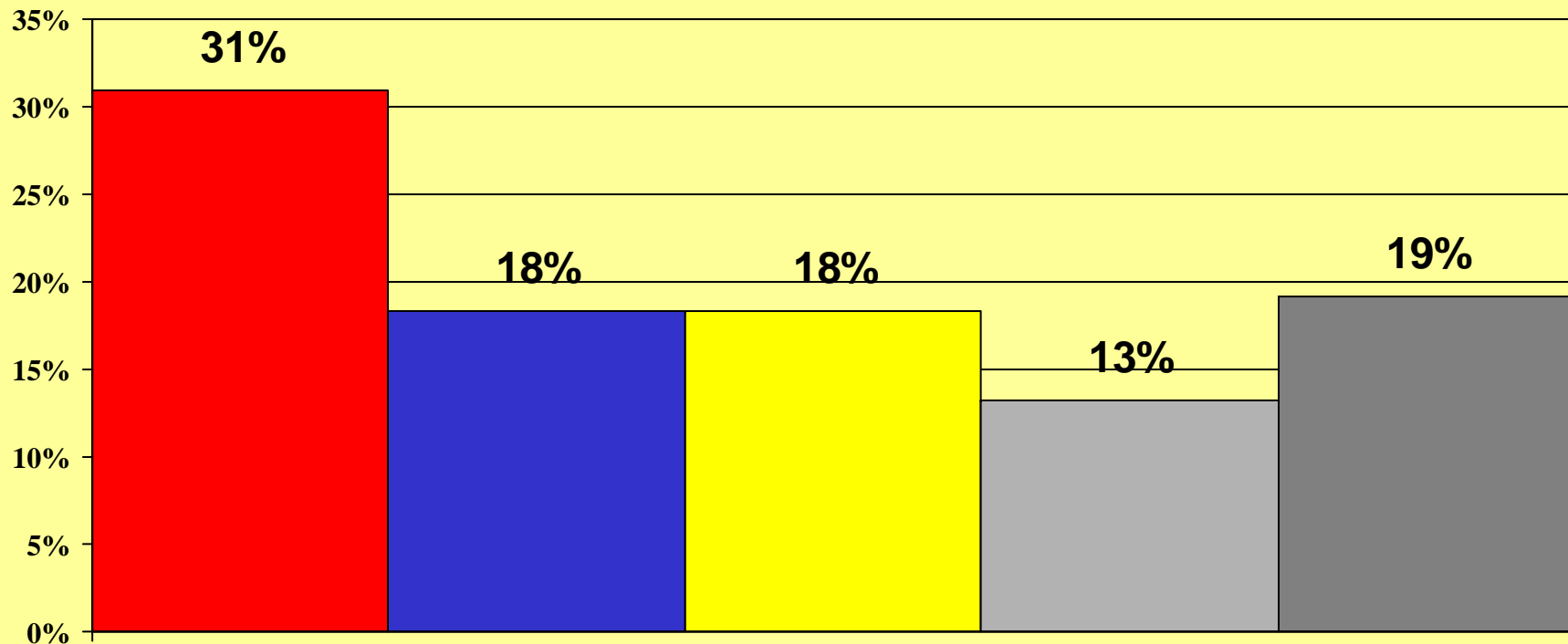
■ Approve ■ Disapprove

CIVITAS INSTITUTE

Congress Approval – N.C.

September	October
Approve	Approve
25	25
Disapprove	Disapprove
68	66 ↓

If the 2008 Democratic primary election for President were held today, which of the following Democrats would you vote for:



October 2007

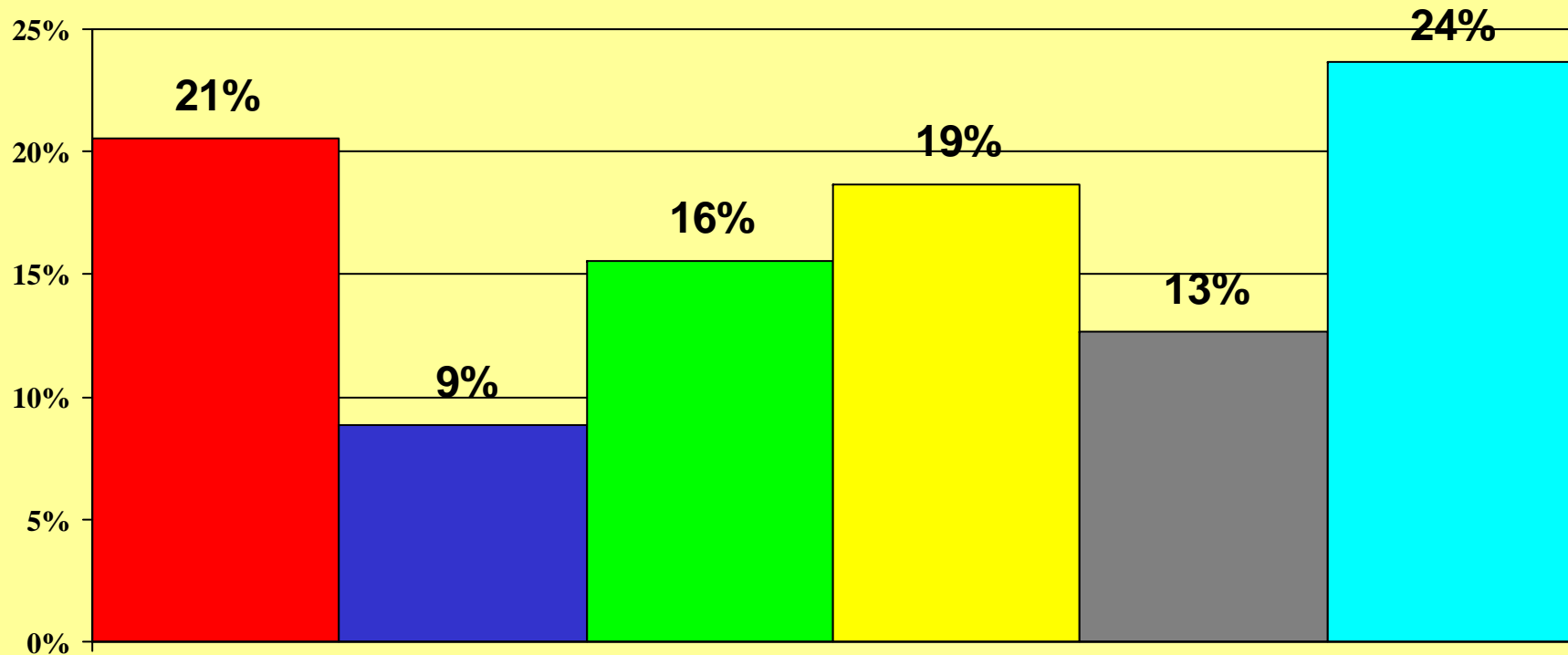
■ Hillary Clinton ■ John Edwards ■ Barack Obama ■ None mentioned ■ Not sure

CIVITAS INSTITUTE

Democrat Presidential Primary

September	October
Clinton - 20	Clinton – 31 ↑
Obama - 19	Obama – 18
Edwards - 22	Edwards – 18 ↓
Not Sure - 20	Not Sure – 19

If the 2008 Republican primary election for President were held today, which of the following Republicans would you vote for:



October 2007

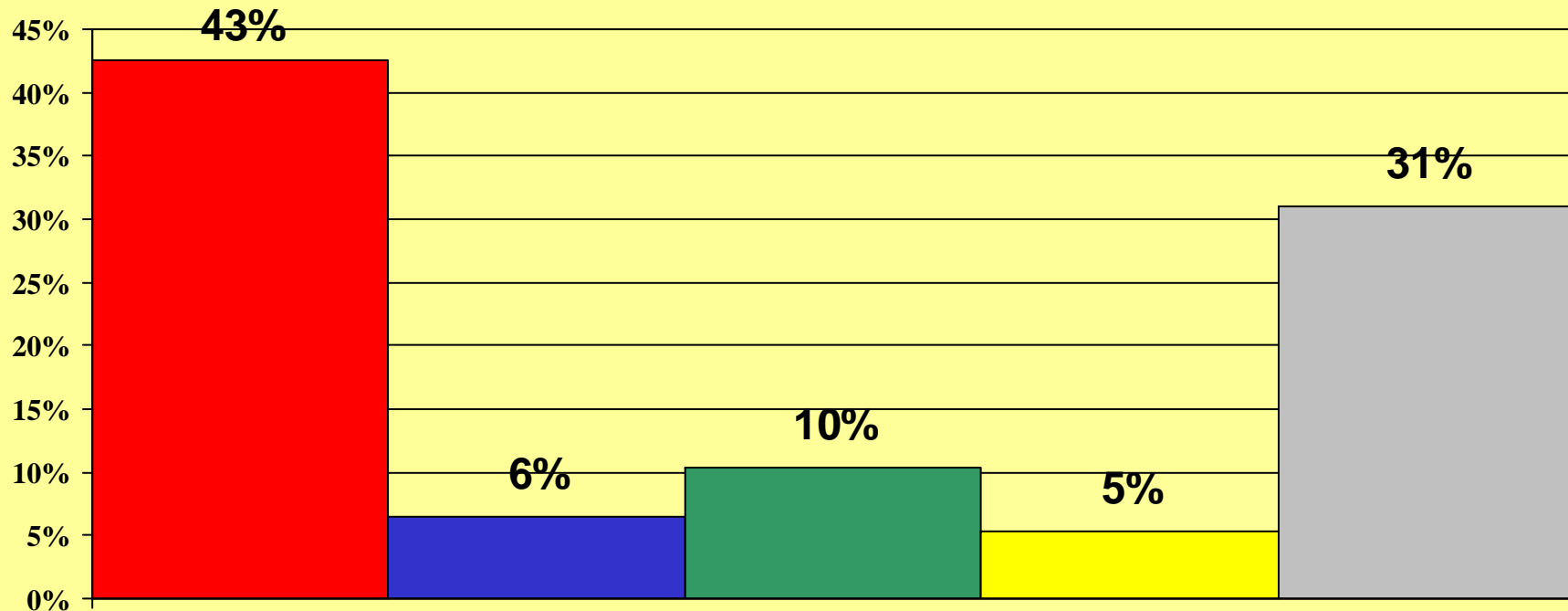
■ Rudy Giuliani ■ John McCain ■ Mitt Romney ■ Fred Thompson ■ None mentioned ■ Not sure

CIVITAS INSTITUTE

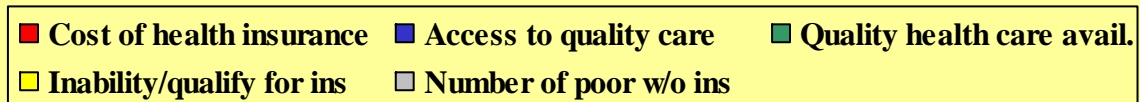
GOP Presidential Primary

September	October
Giuliani - 21	Giuliani – 21
Thompson - 25	Thompson – 19 ↓
Romney -13	Romney – 16 ↑
Not Sure - 16	Not Sure – 24 ↑

When you think about health care, which of the following is your major concern:

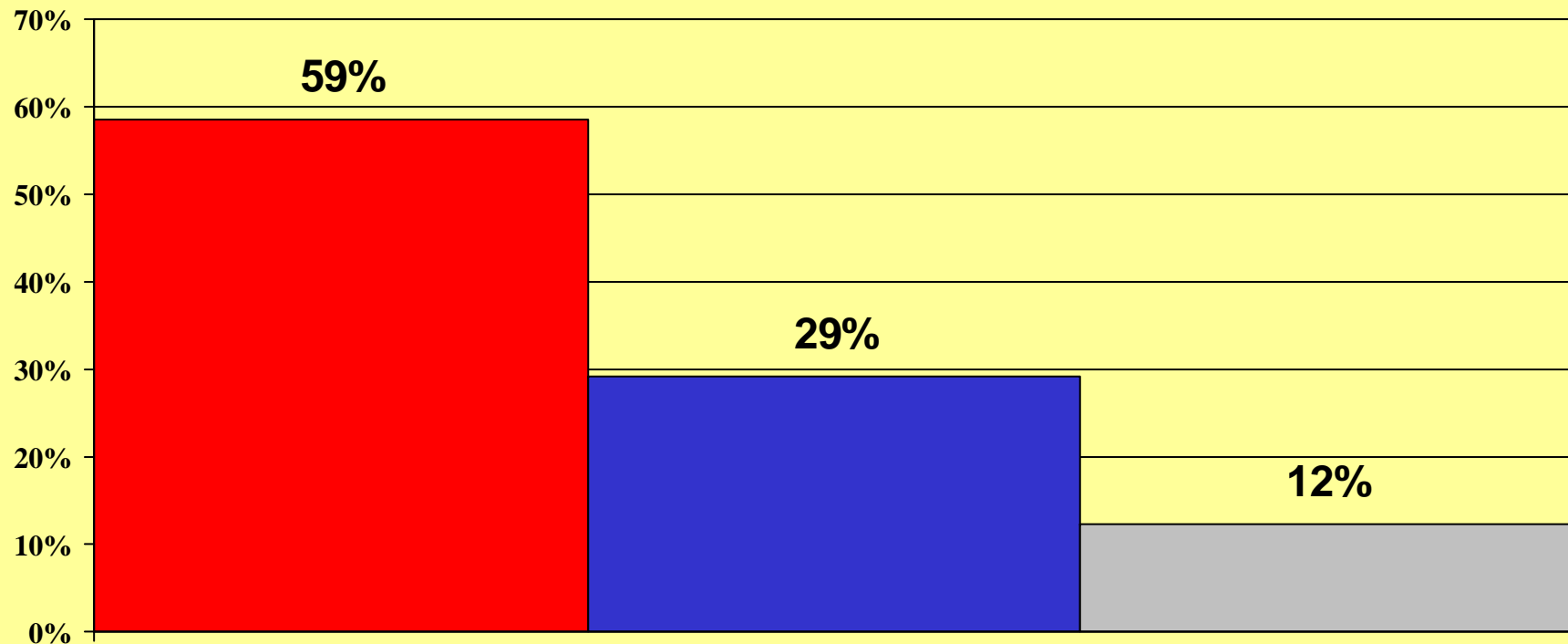


October 2007



CIVITAS INSTITUTE

Do you support a State mandate requiring all health insurance policies to include mental health coverage even if it causes a 5-10% increase in the cost of your insurance?

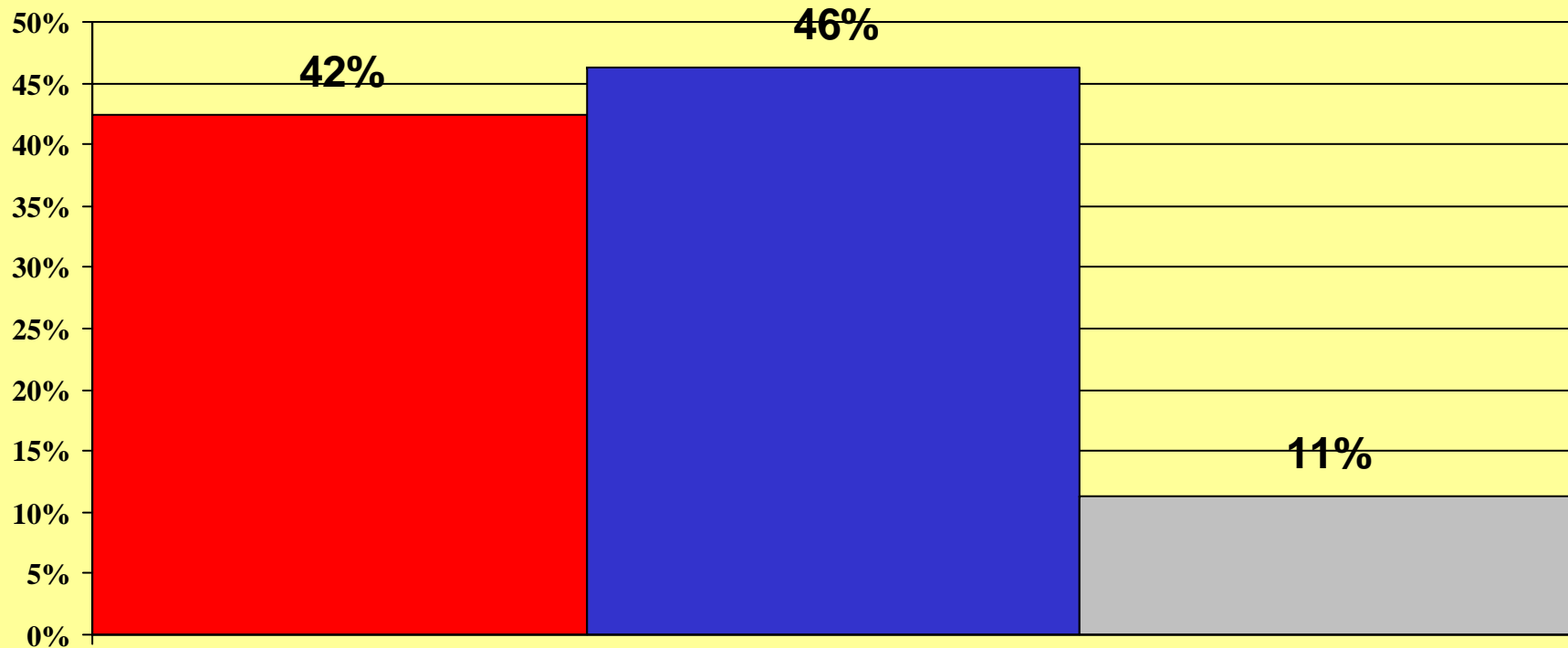


October 2007

■ Yes ■ No ■ Not sure

CIVITAS INSTITUTE

Do you think Medicare adequately provides health insurance for older Americans?

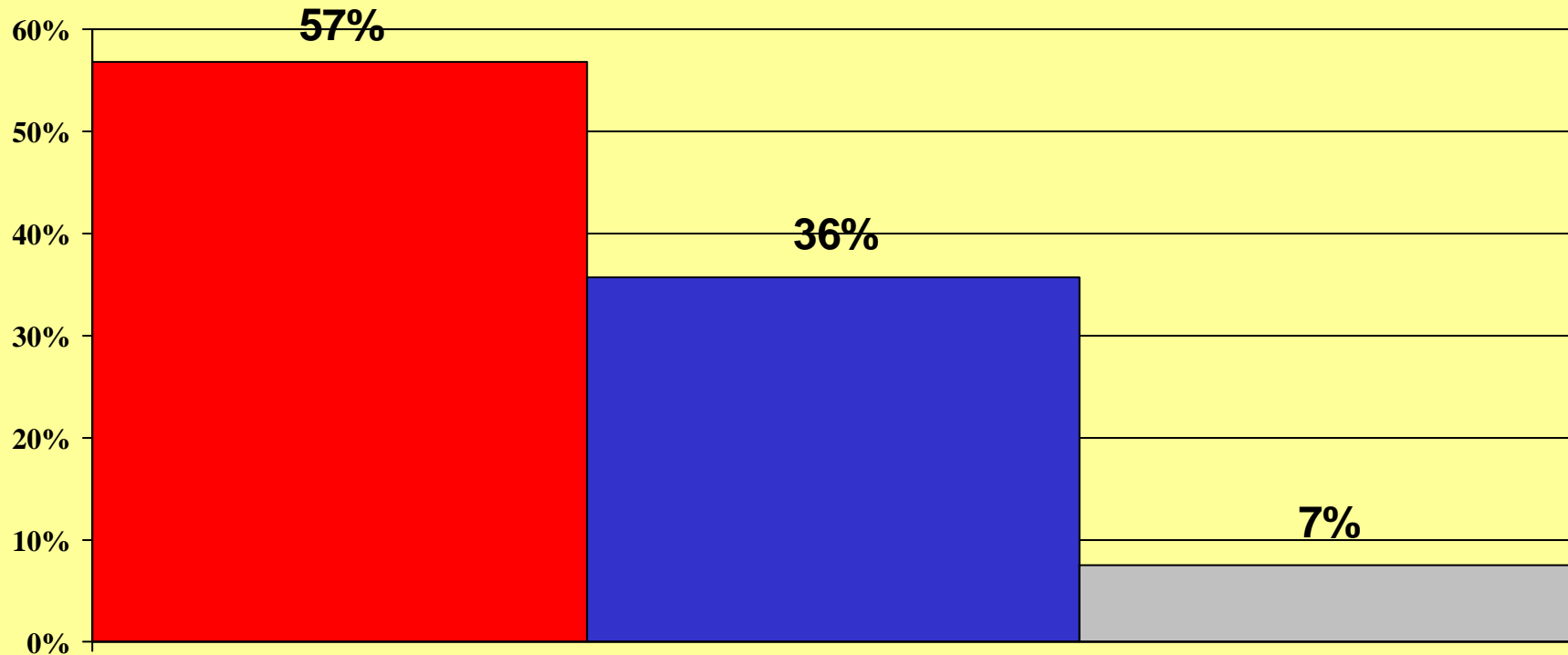


October 2007

■ Yes ■ No ■ Not Sure

CIVITAS INSTITUTE

Should all businesses in North Carolina with more than five employees be required to provide health insurance for their employees?

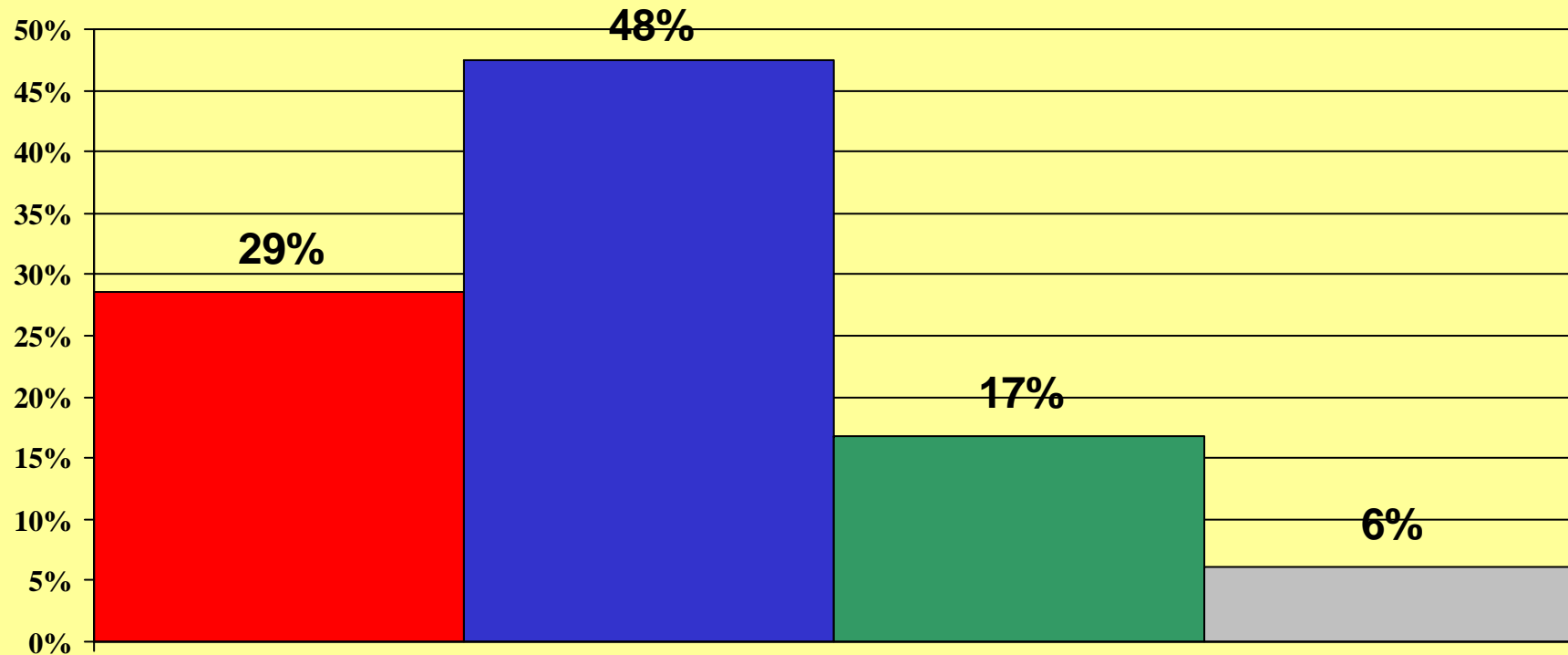


October 2007

■ Yes ■ No ■ Not Sure

CIVITAS INSTITUTE

Do you think the quality of health care you receive in North Carolina is:

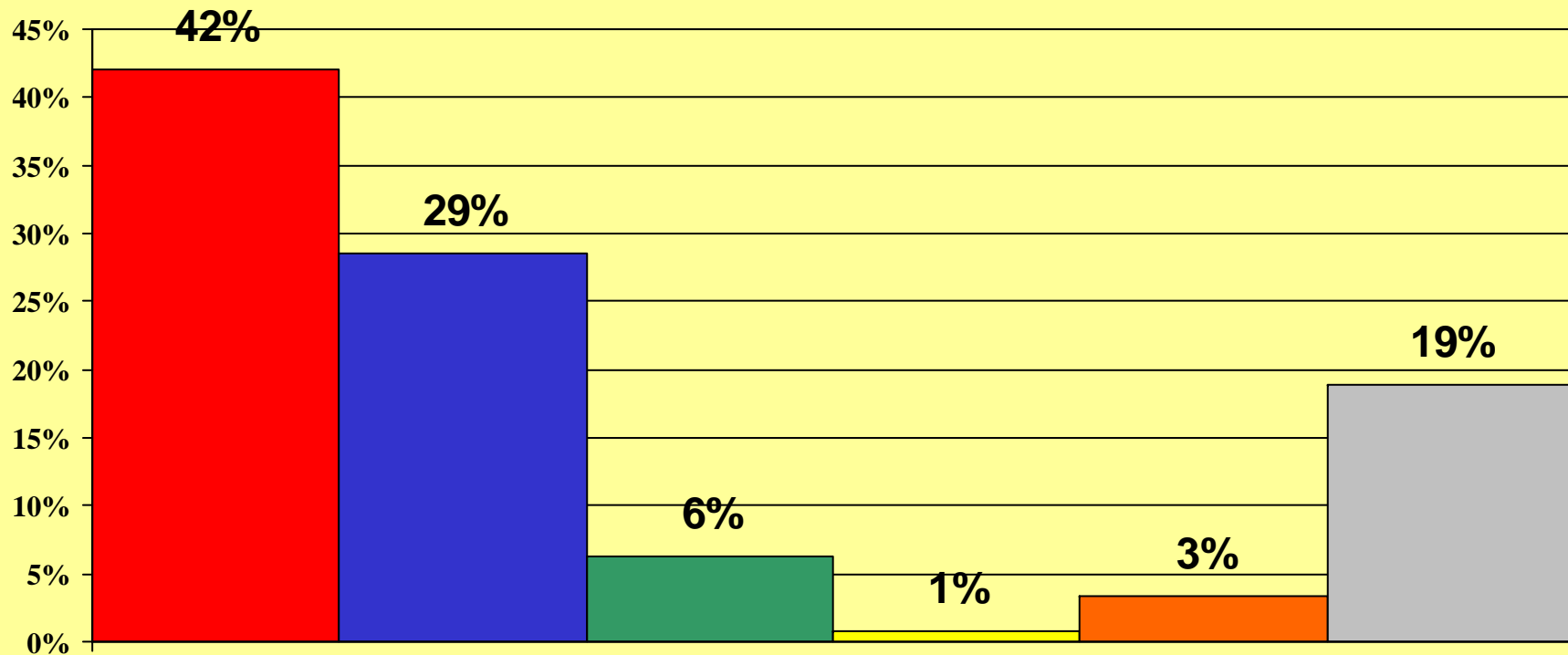


October 2007

■ Excellent ■ Good ■ Only fair ■ Poor

CIVITAS INSTITUTE

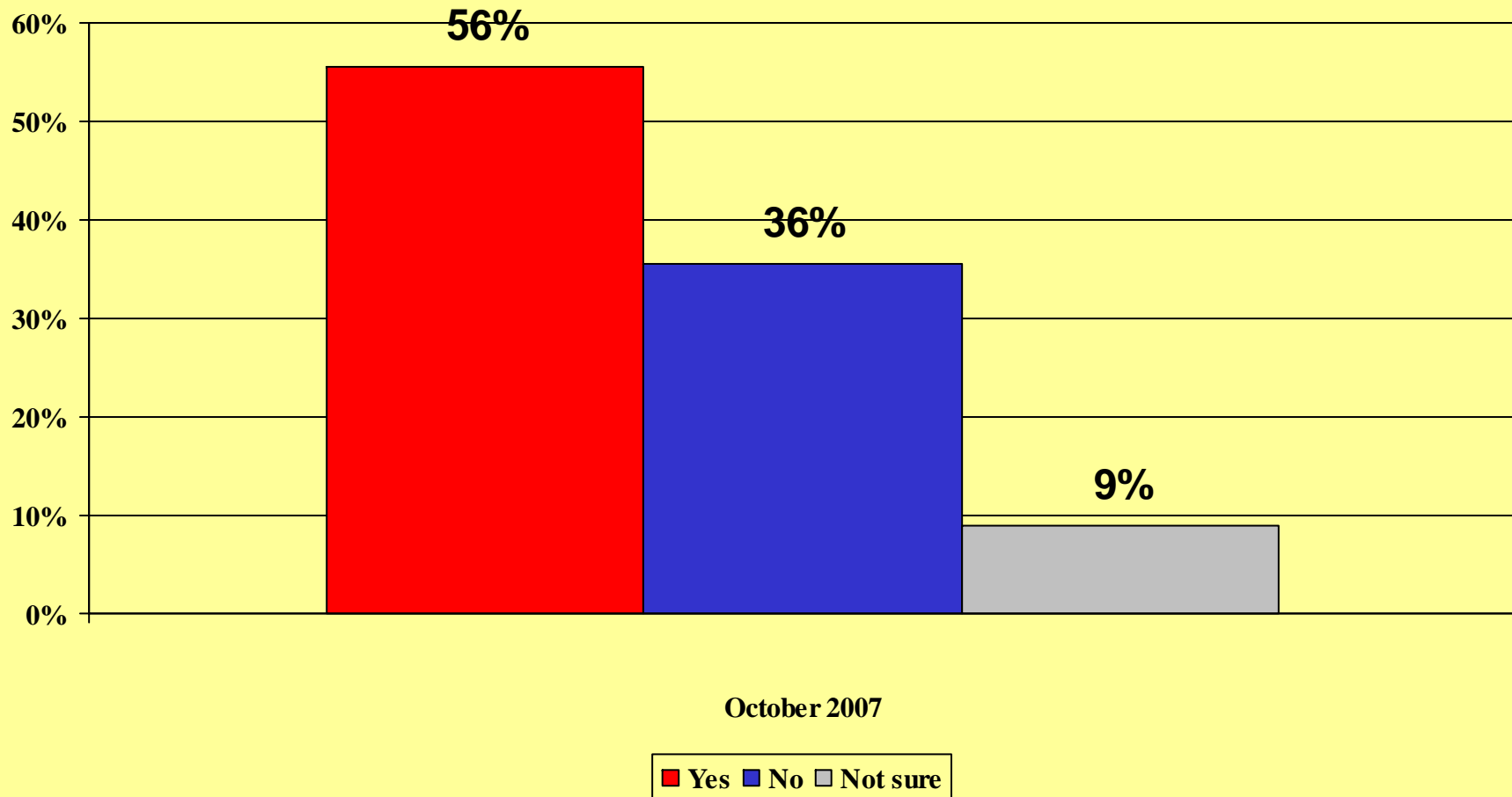
Up to what income level do you think the Government should provide health insurance for the working poor:



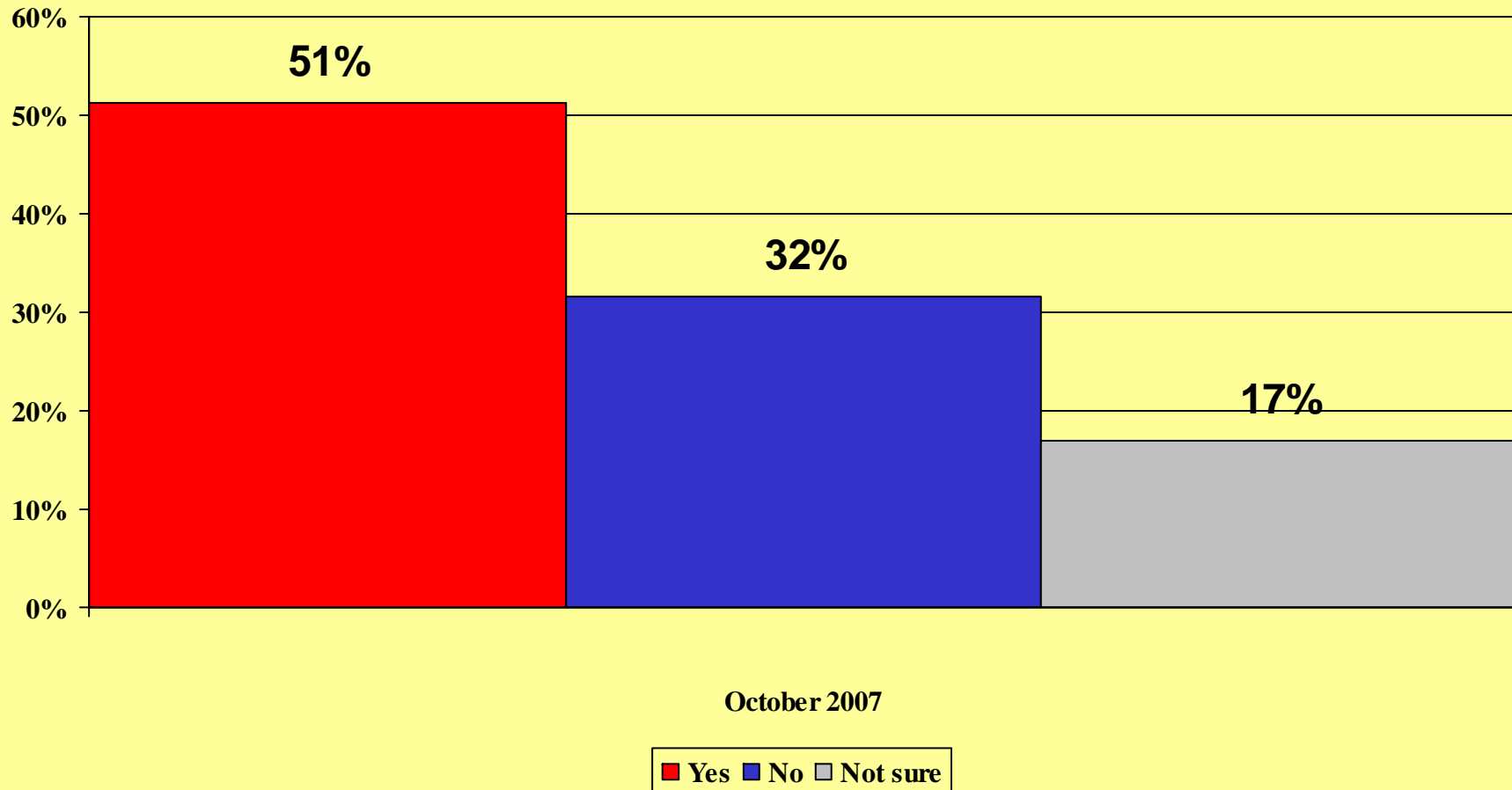
October 2007

■ \$21,000 ■ \$41,000 ■ \$62,000 ■ \$83,000 ■ over \$83,000 ■ not sure

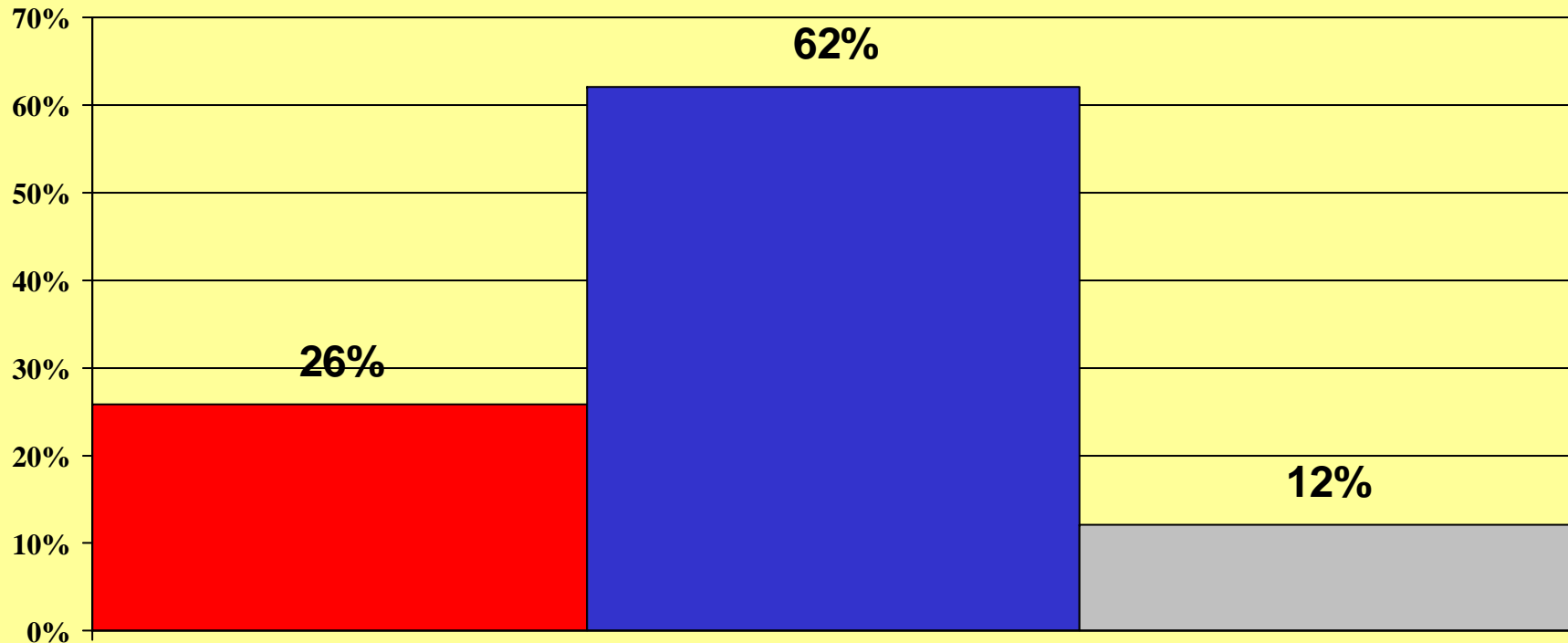
Do you support universal health care coverage where the Federal Government would insure that every American receives some type of health insurance coverage even if it means an increase in taxes?



Do you support the \$35 billion expansion of the Children's Health Insurance Plan that has been approved by congress but vetoed by President Bush?



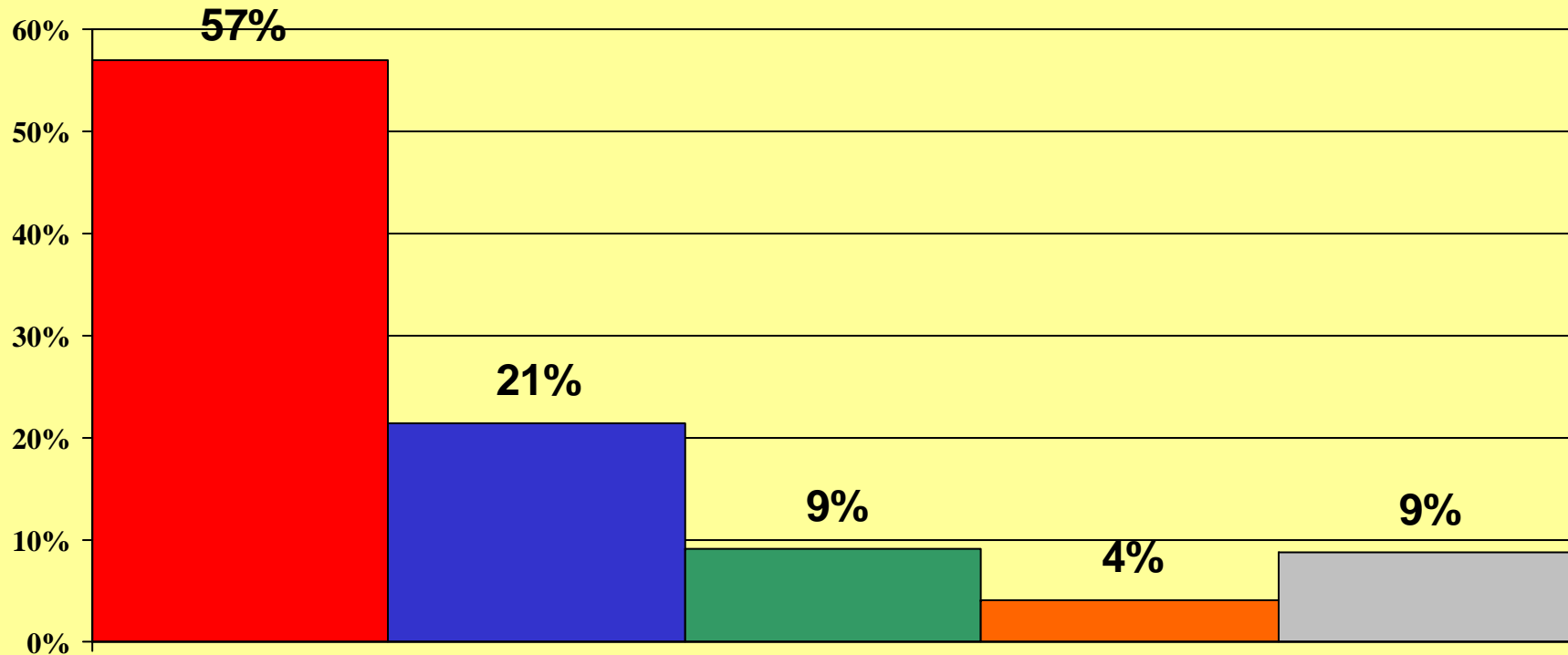
Do you think the Children's Health Insurance Plan should be expanded to cover children from families of four who earn between \$62,000 and \$82,000?



October 2007

■ Yes ■ No ■ Not sure

Up to what age should a child be covered by the Children's Health Insurance Plan?

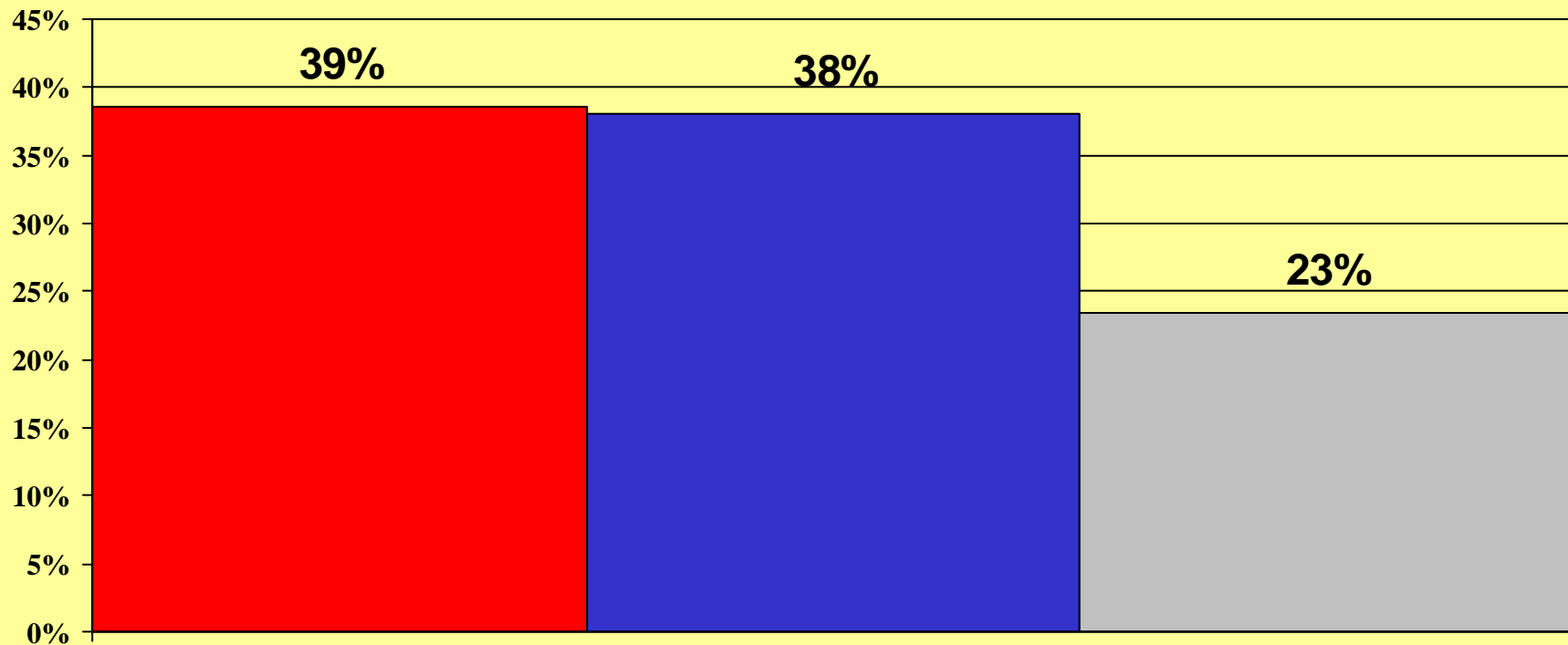


October 2007

■ 19 years of age ■ 21 years of age ■ 24 years of age ■ over 24 ■ not sure

CIVITAS INSTITUTE

Do you support a moratorium on garbage landfills in North Carolina that includes a \$2 per ton tax on garbage?

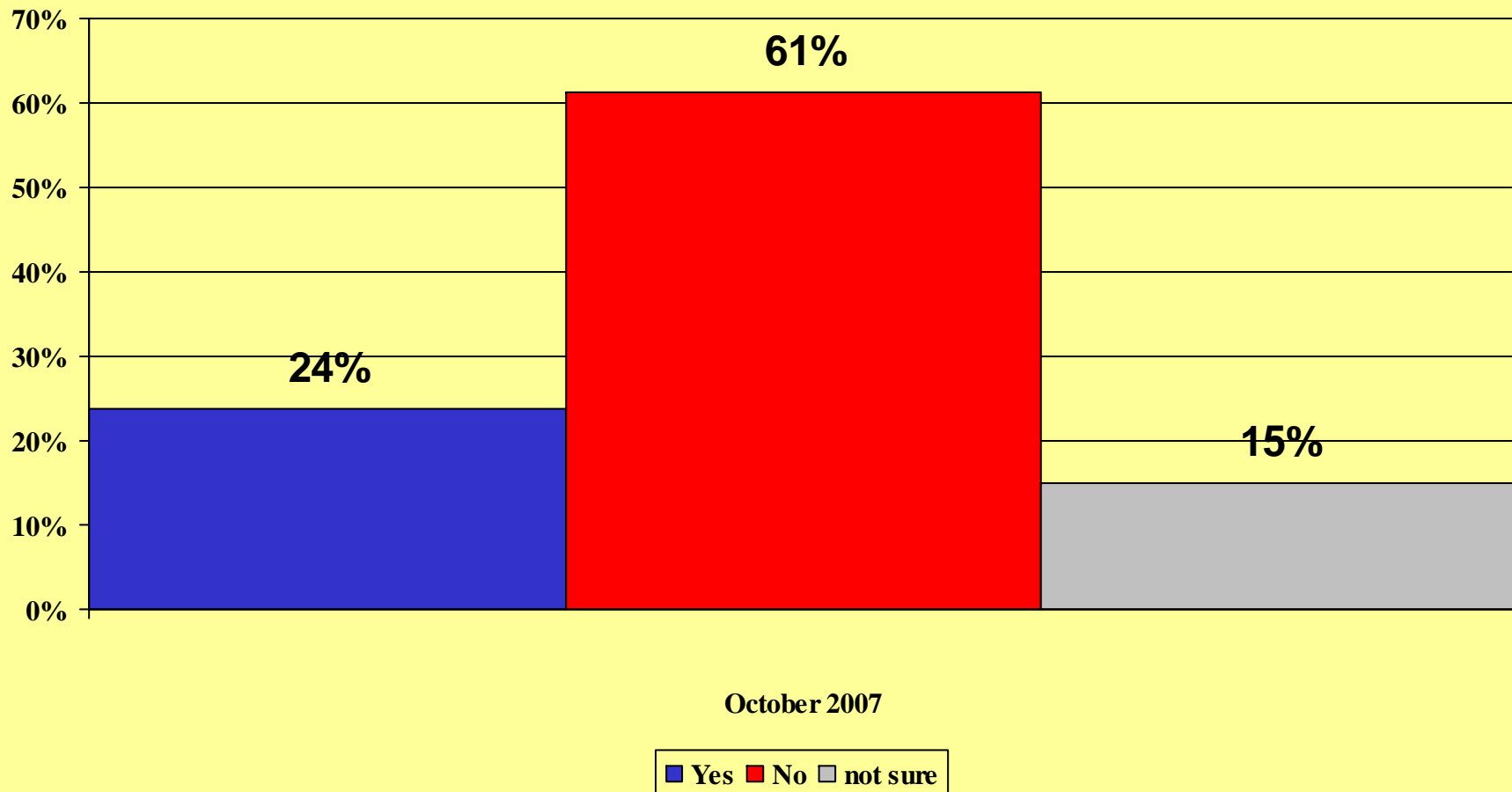


October 2007

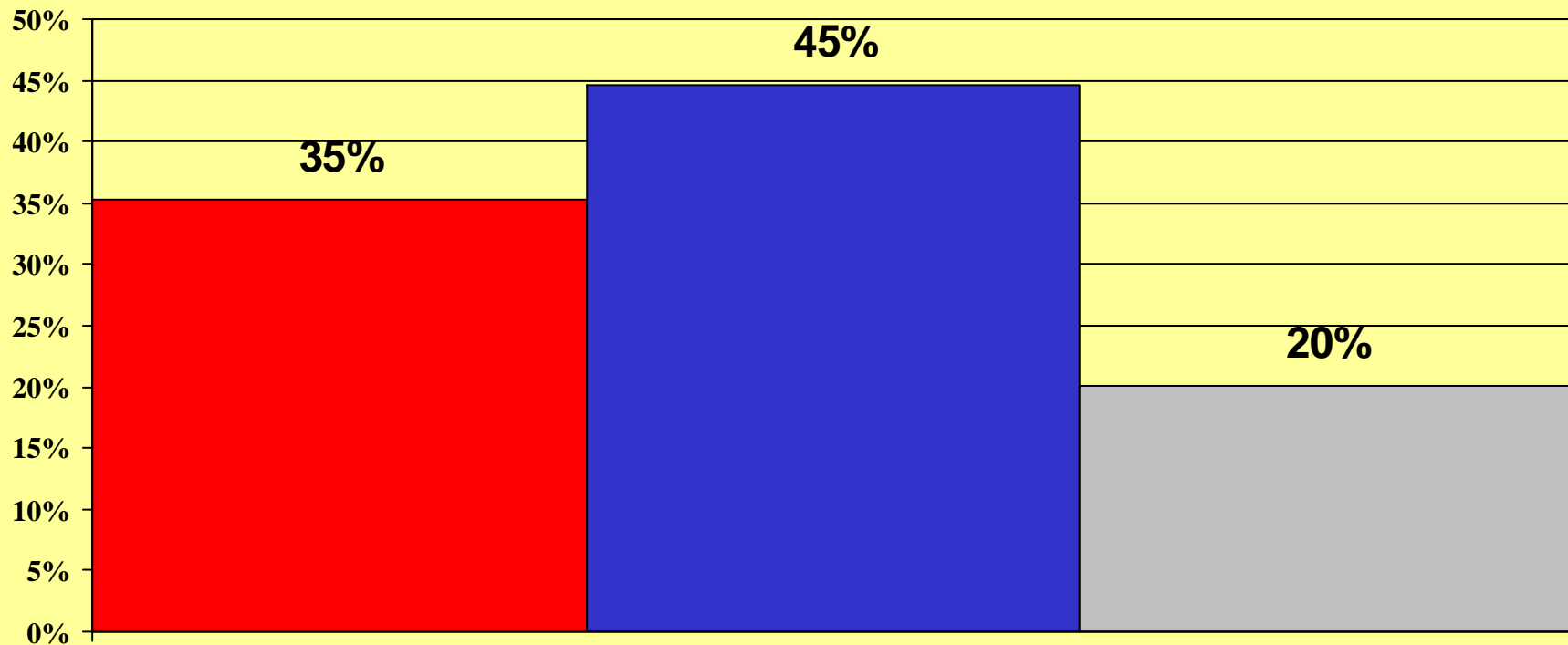
■ Yes ■ No ■ Not sure

CIVITAS INSTITUTE

Do you think highway user fees, such as gas tax, car tags and vehicle sales tax, should be used for light rail in Charlotte and Raleigh?



Do you think light rail service in metropolitan areas should be funded by the state or by County and Municipal governments?

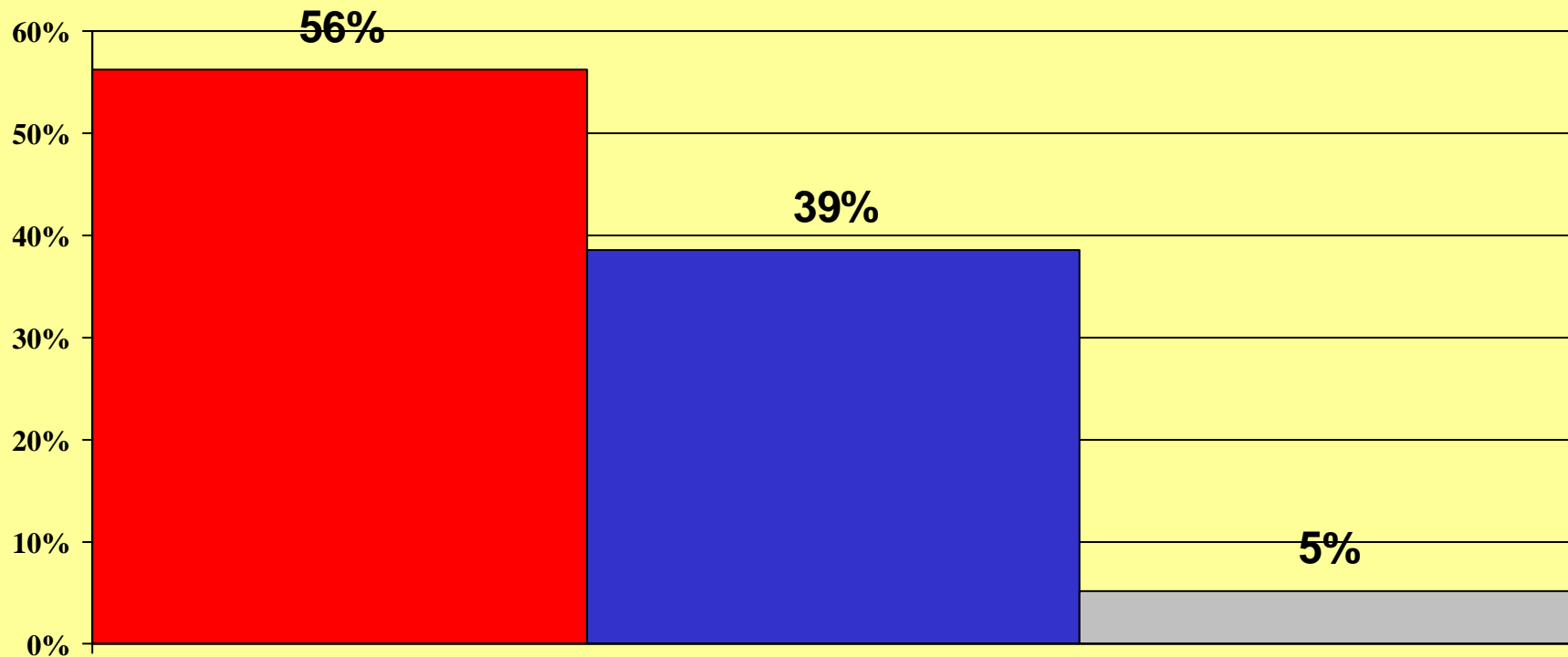


October 2007

■ State ■ County/Municipal ■ Not Sure

CIVITAS INSTITUTE

Do you support toll roads if there is no other way needed roads can be built in the near future?

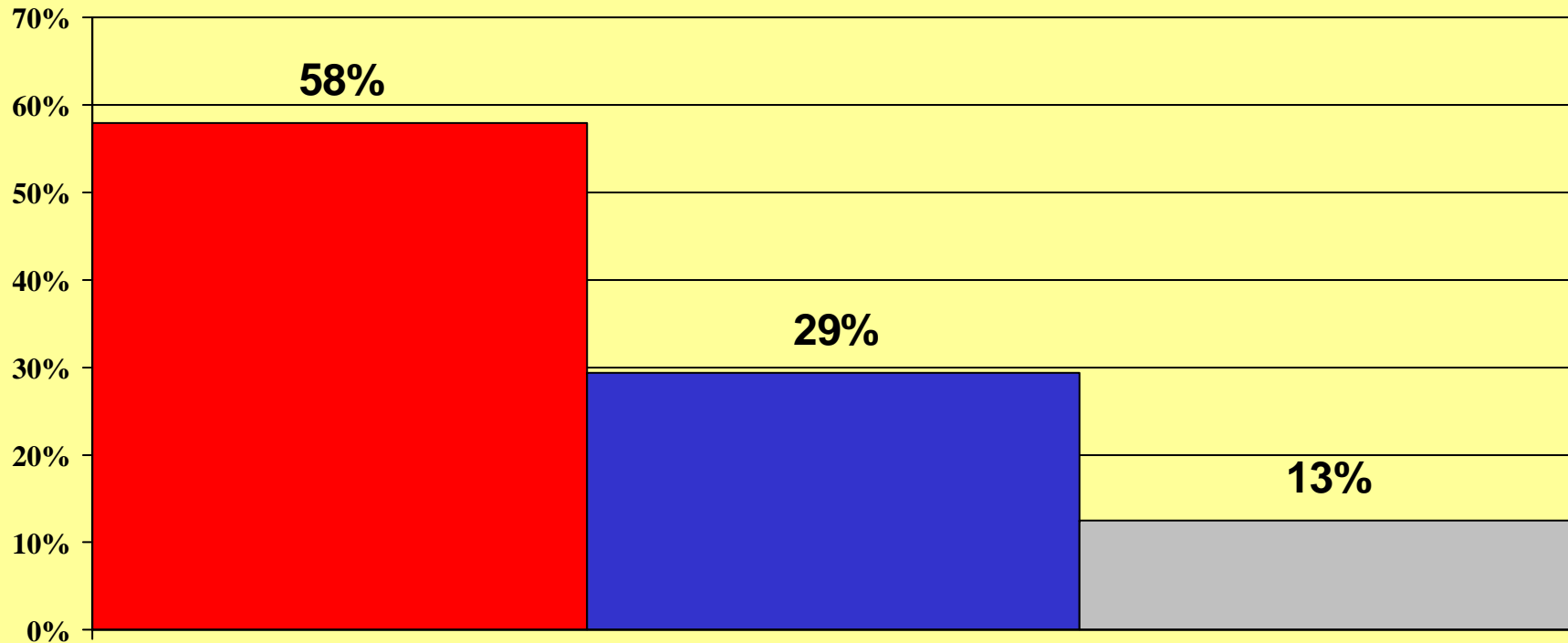


October 2007

■ Yes ■ No ■ Not Sure

CIVITAS INSTITUTE

General fund spending has increased by 44% in the last five years while highway spending has increased only 29%. Do you think some of the increased general fund revenues should be used to build roads?

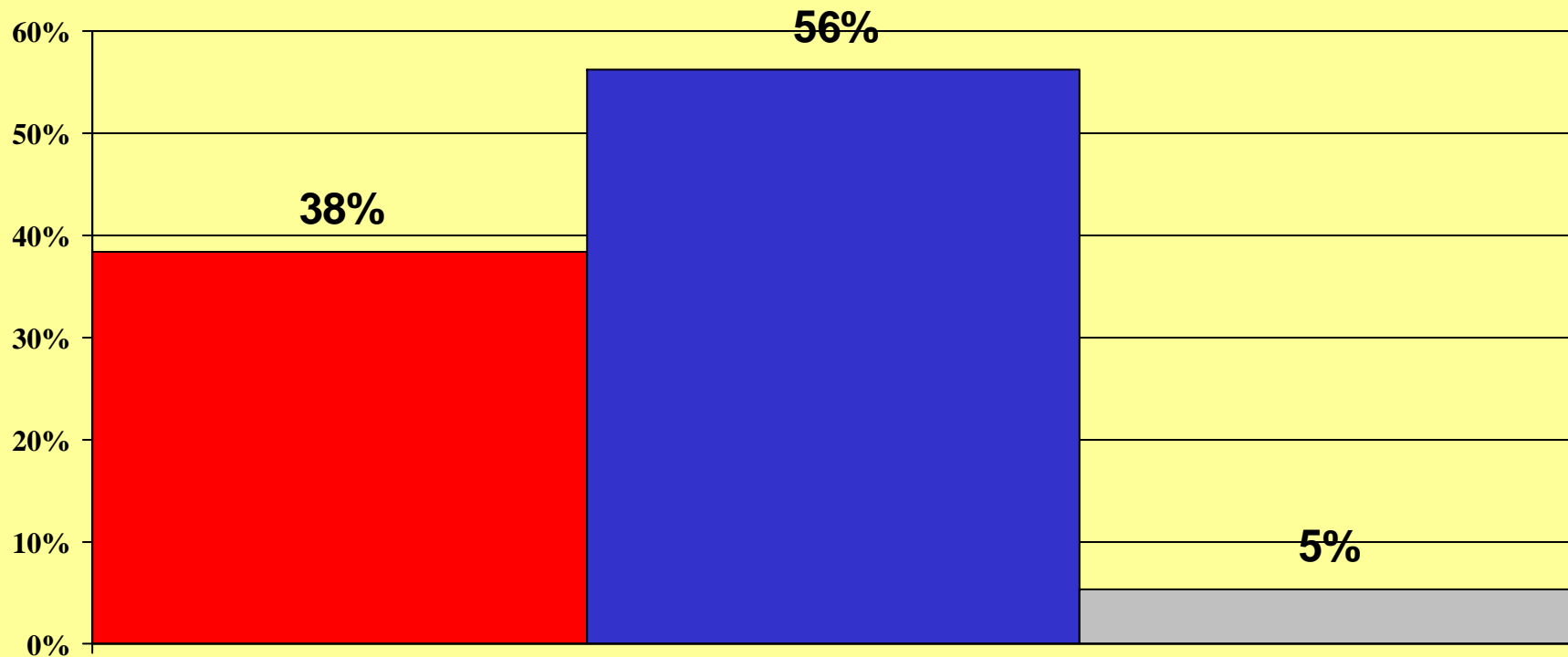


October 2007

■ Yes ■ No ■ Not Sure

CIVITAS INSTITUTE

Would you support higher gas taxes if you knew all of the new revenue would be used to build and repair roads and bridges?

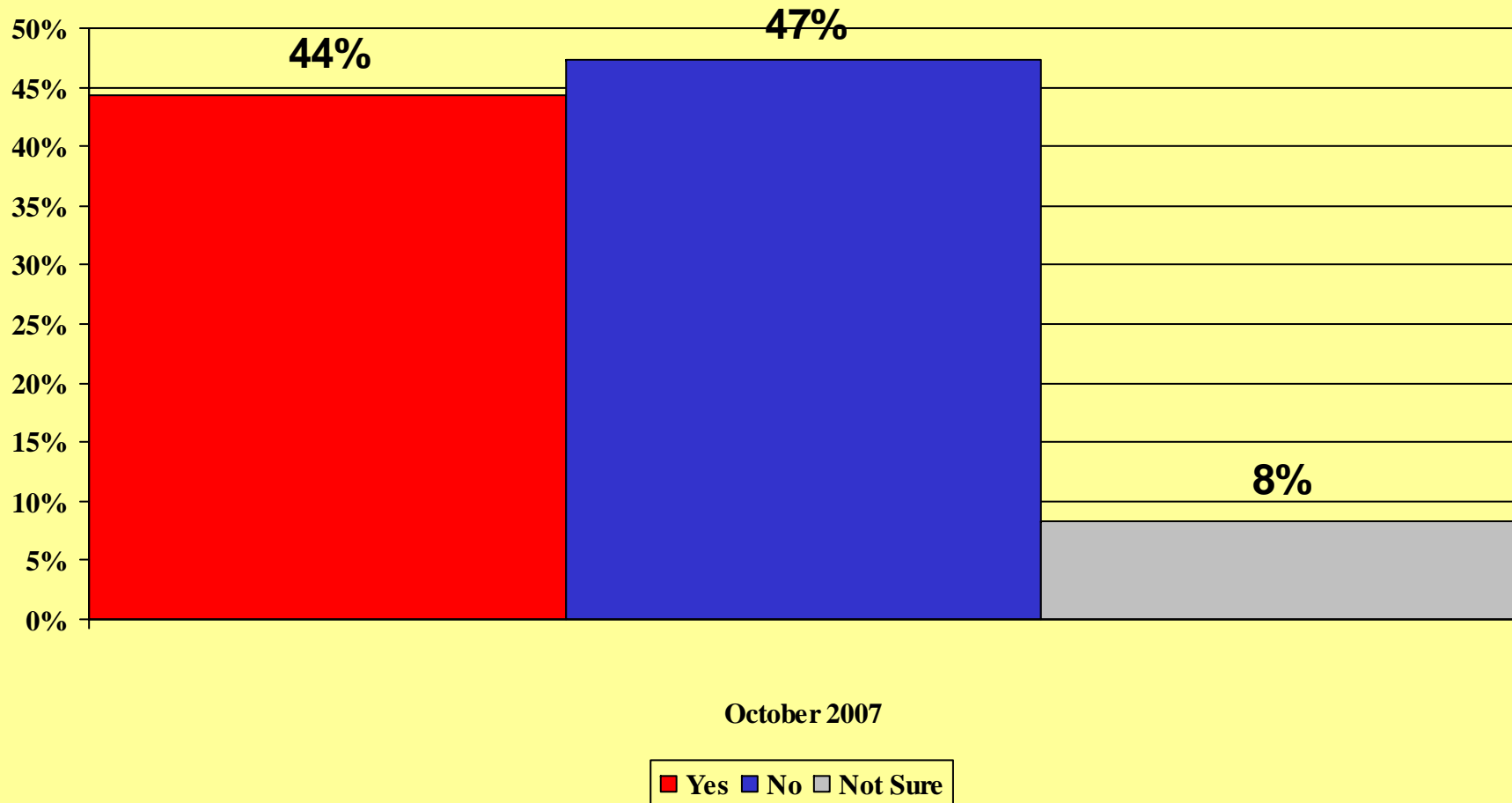


October 2007

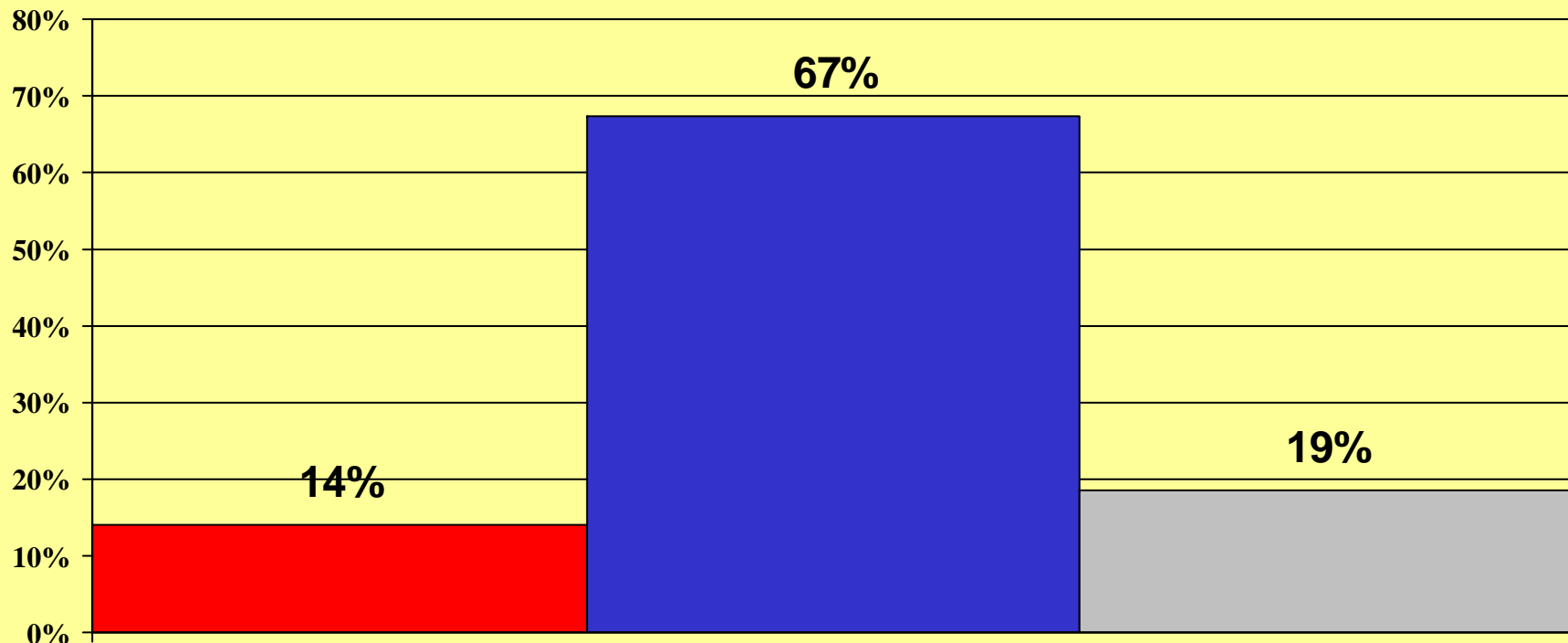
■ Yes ■ No ■ Not Sure

CIVITAS INSTITUTE

The sales tax on automobiles is now 3% while all other items are taxed at 6.75%. Would you support imposing the same tax on vehicles as on other items if the entire revenue was used to build and repairs roads and bridges?



The General Assembly transferred \$170 million from the highway fund to the general fund. Do you approve of this transfer?

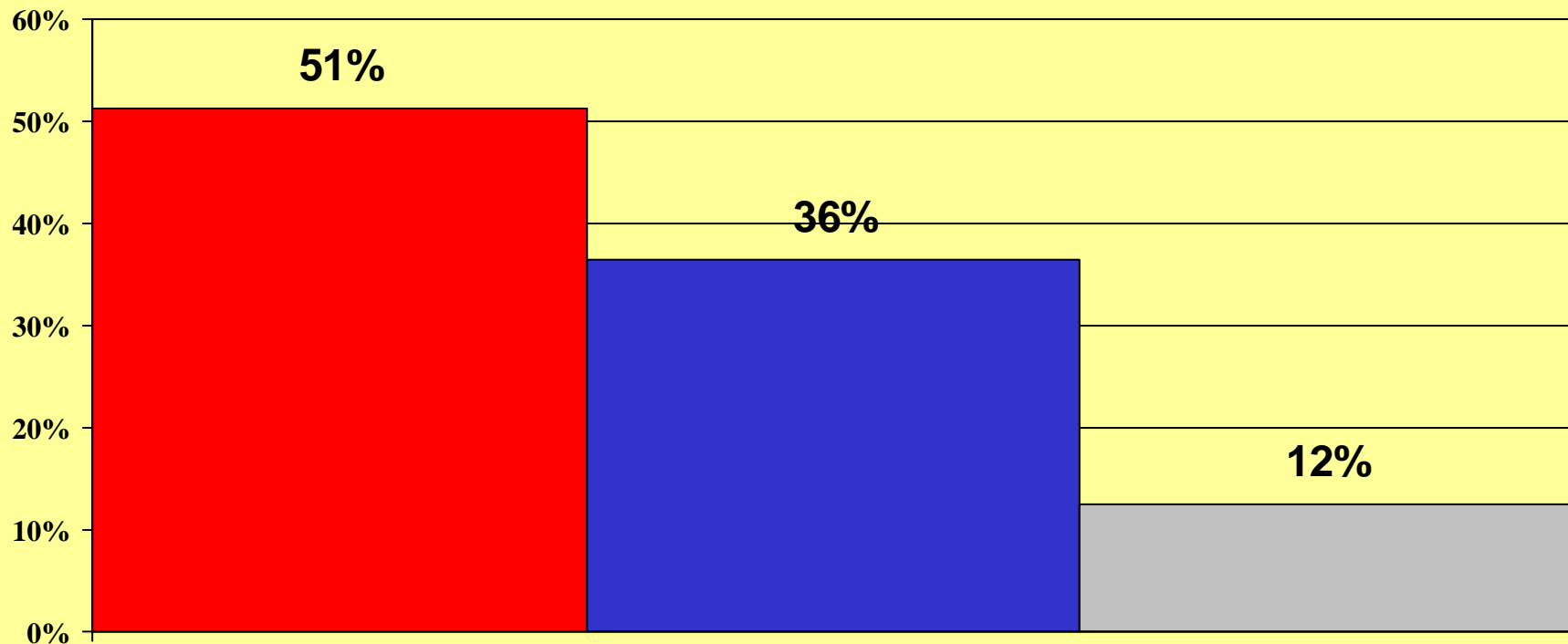


October 2007

■ Yes ■ No ■ Not Sure

CIVITAS INSTITUTE

Do you think some items, such as bike trails, sidewalks, and city lights, should be funded out of the general fund permitting the highway fund dollars to be used to build and repair roads?

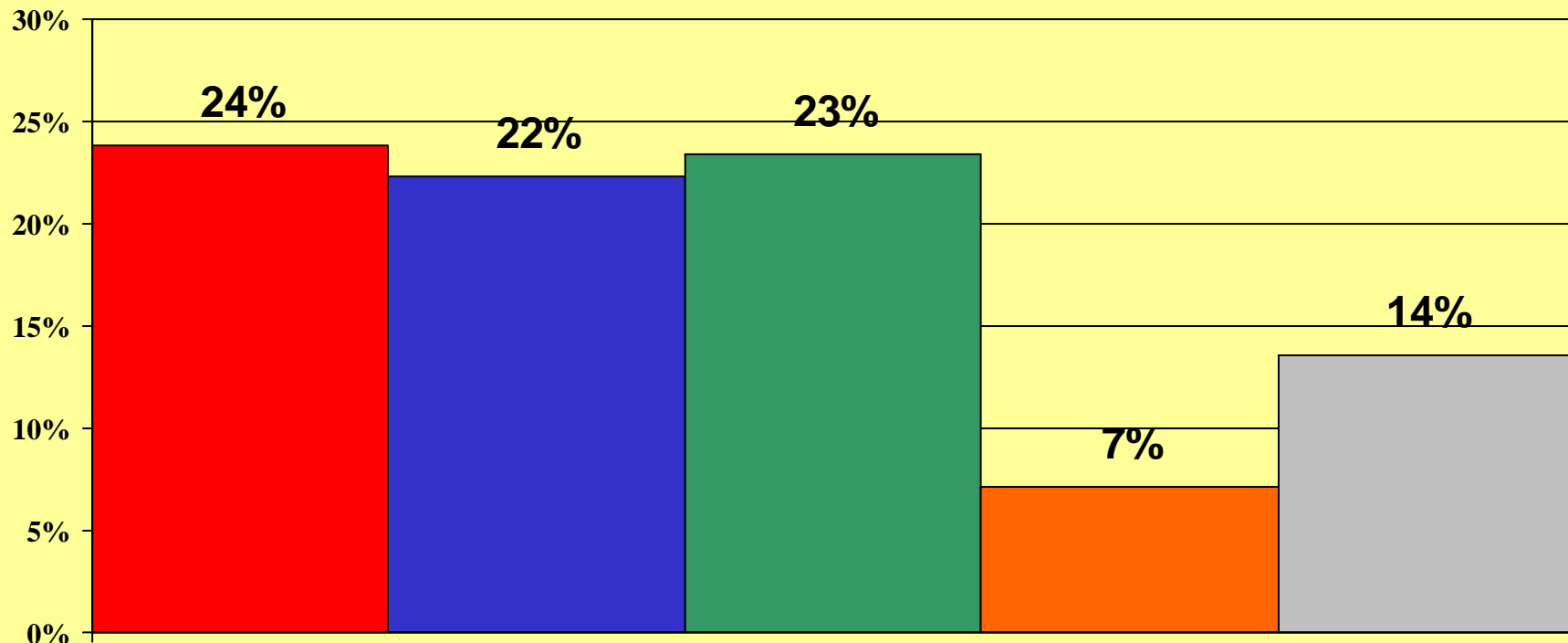


October 2007

■ Yes ■ No ■ Not sure

CIVITAS INSTITUTE

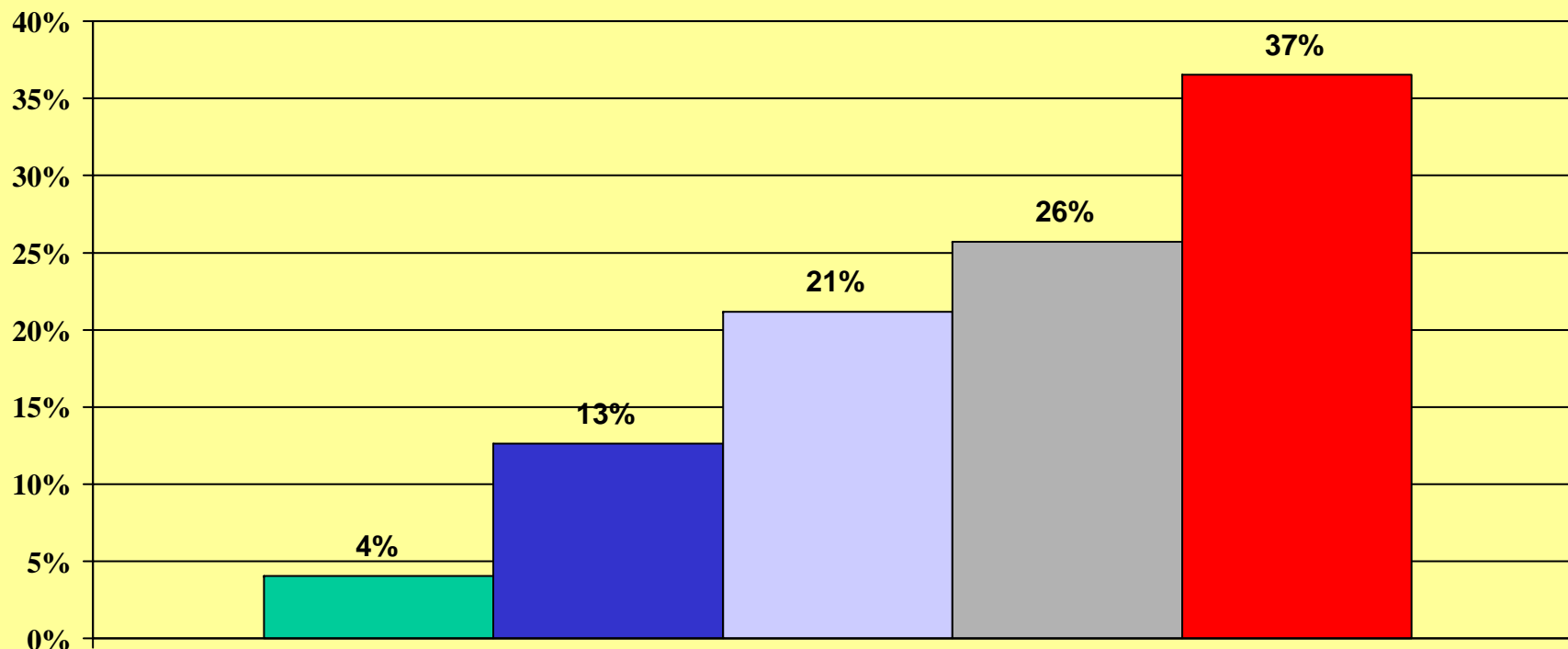
What do you think is most important to a business considering locating in North Carolina:



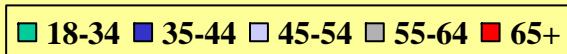
October 2007

■ Tax/cash incentives ■ Low business taxes ■ Good public schools ■ Good community colleges ■ Highway/transportation

Age group

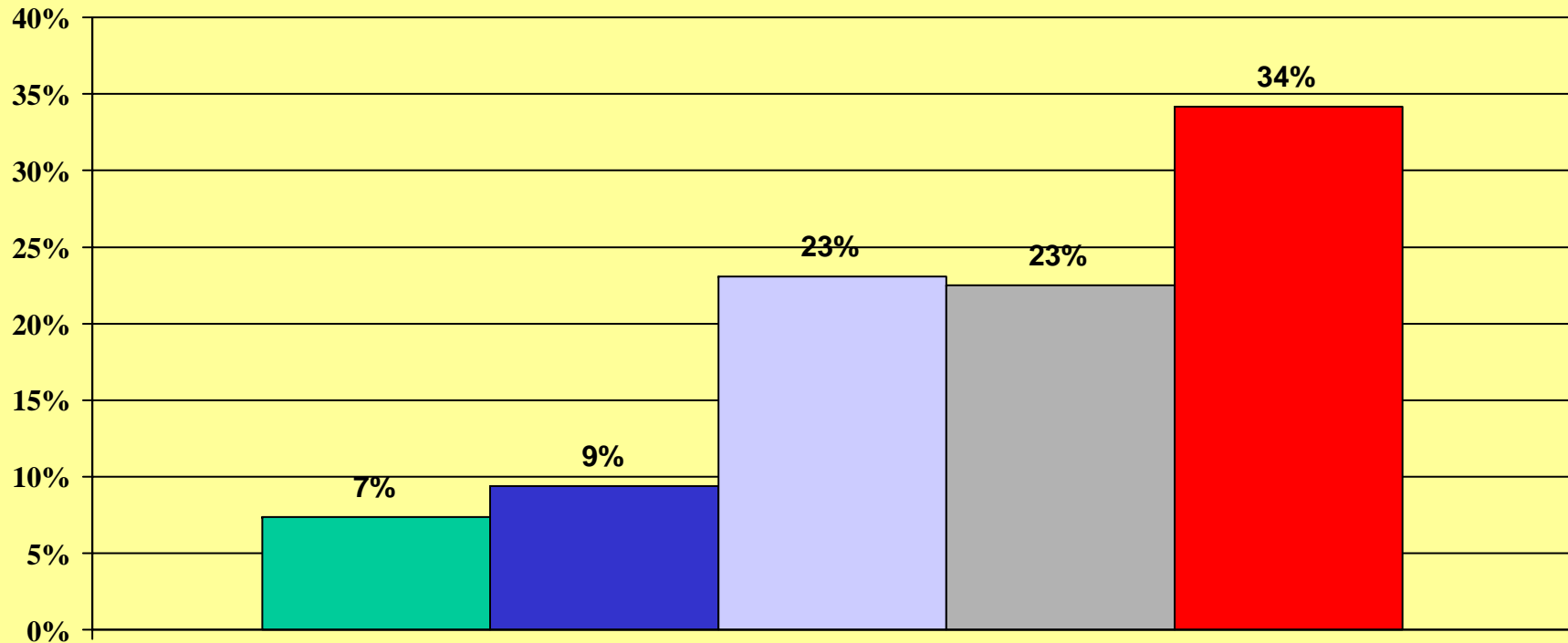


October 2007



CIVITAS INSTITUTE

Political Philosophy

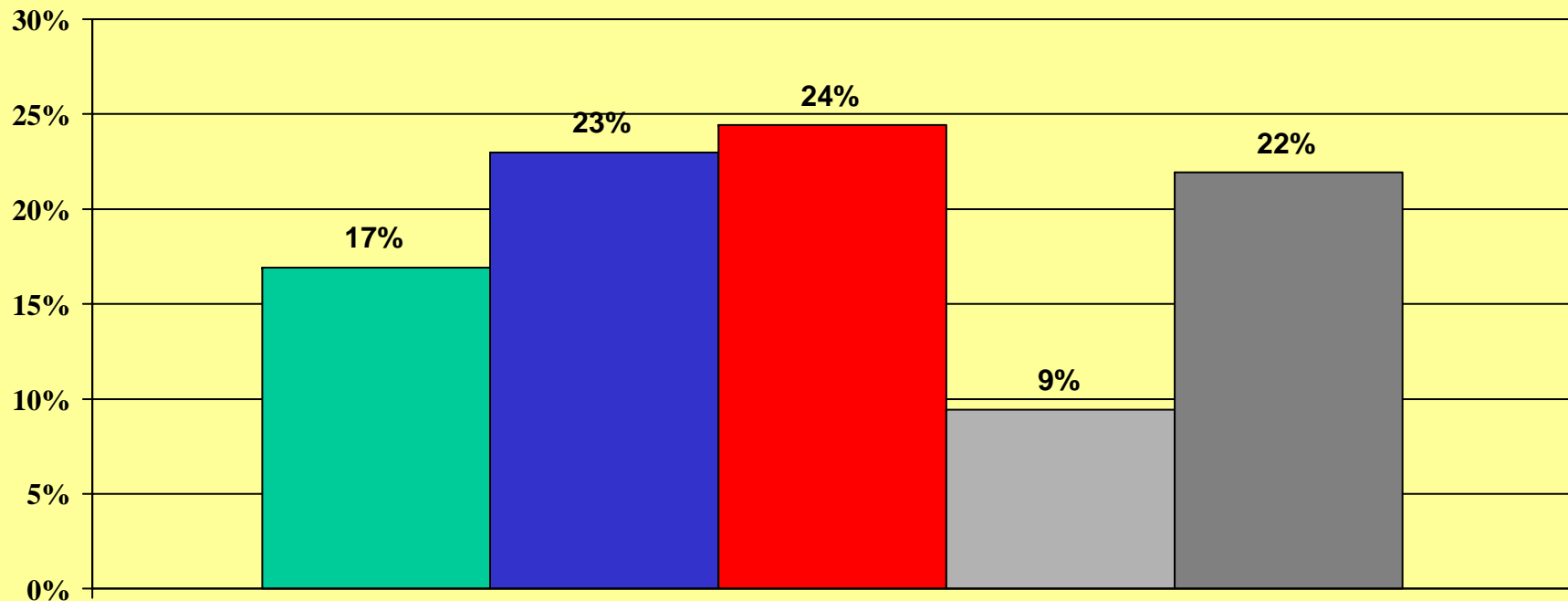


October 2007

Very Liberal Somewhat Liberal Somewhat Conservative Very Conservative Moderate

CIVITAS INSTITUTE

Regardless of your party registration, do you:

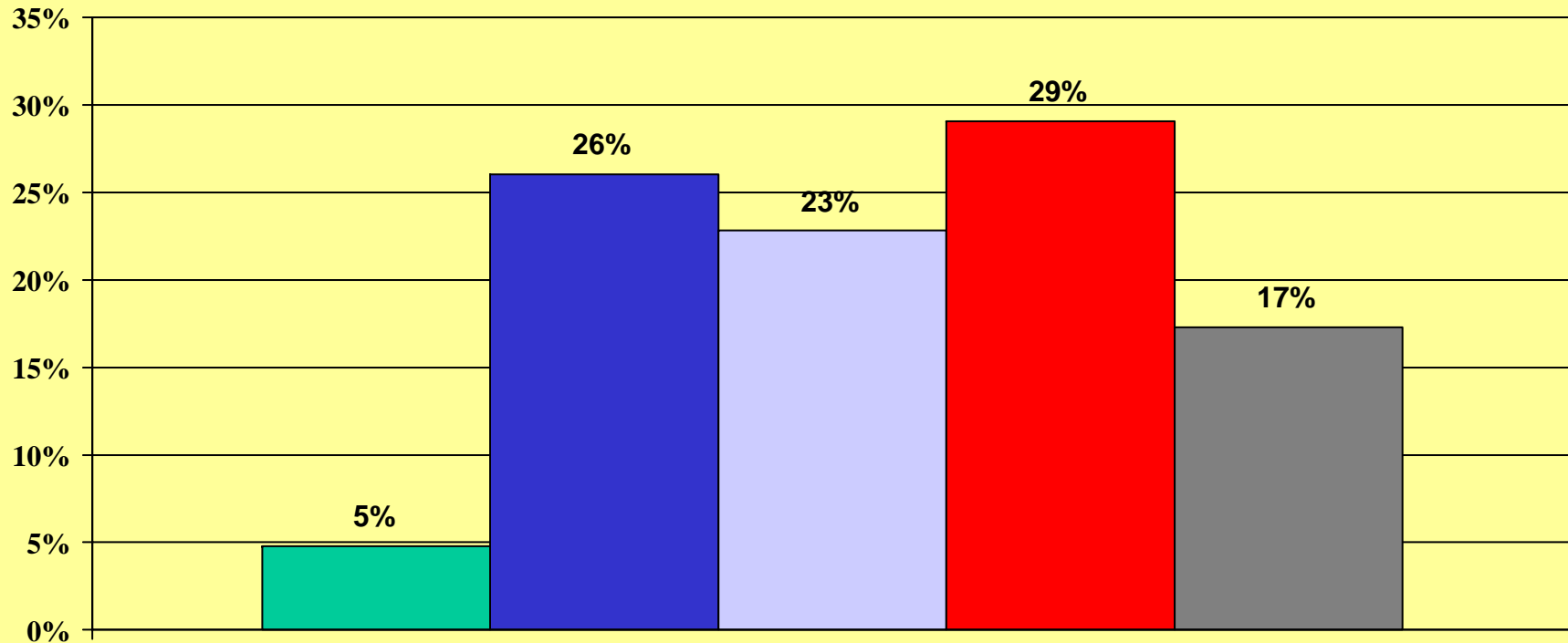


October 2007

Always vote Democrat Vote Dem more than Rep Vote Rep more than Dem
Always vote Republican Both equally/split ticket

CIVITAS INSTITUTE

Education

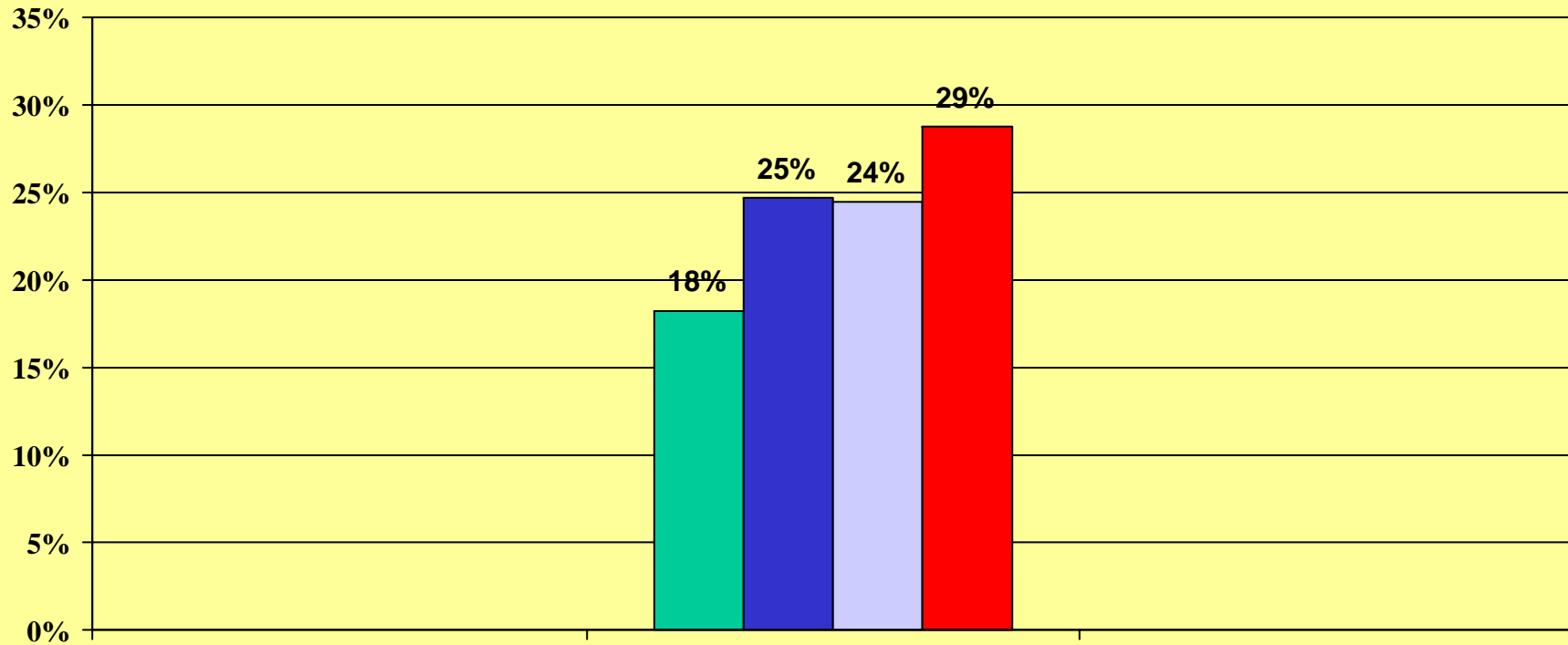


October 2007

■ Less than HS graduate ■ High school graduate ■ 2 yr college/technical ■ 4 yr college graduate ■ Post graduate

CIVITAS INSTITUTE

Family income

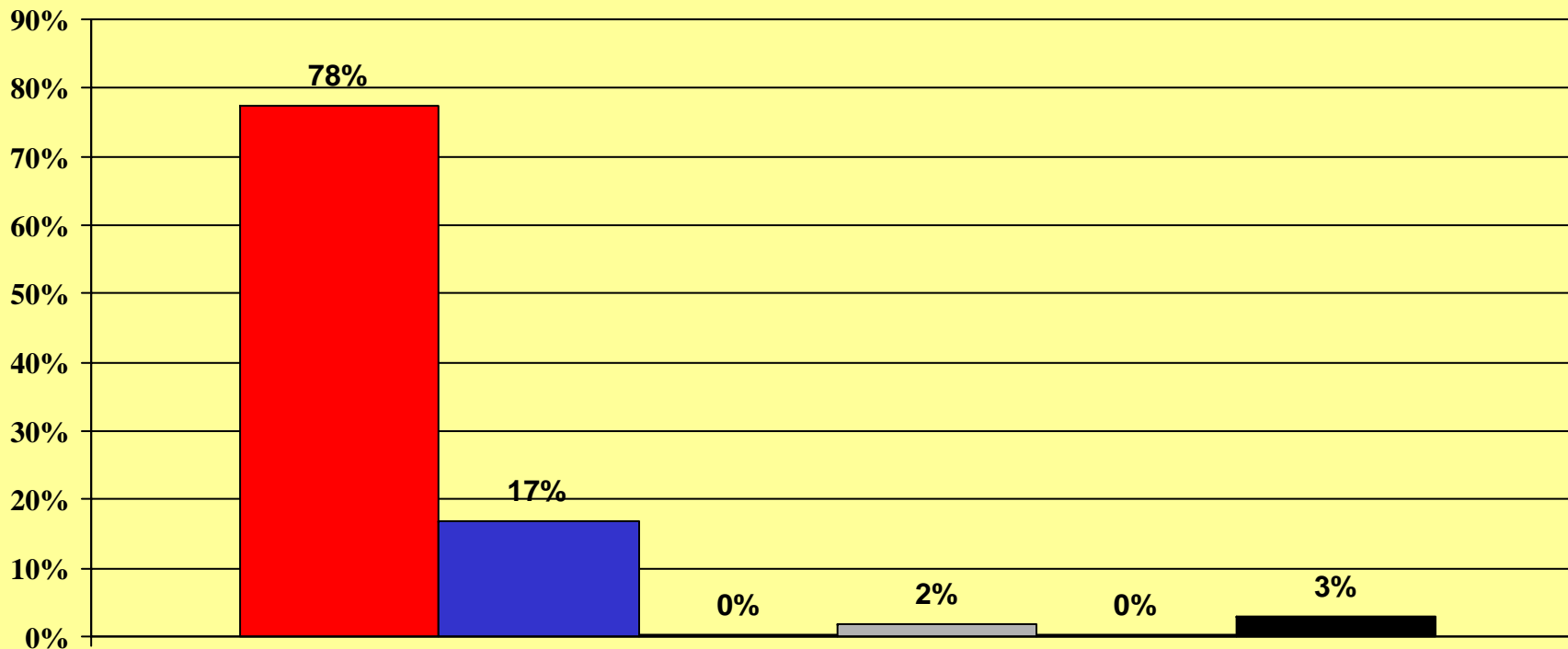


October 2007

■ Under \$25,000 ■ \$25,000-\$49,999 ■ \$50,000-\$74,999 ■ \$75,000 or more

CIVITAS INSTITUTE

National Heritage

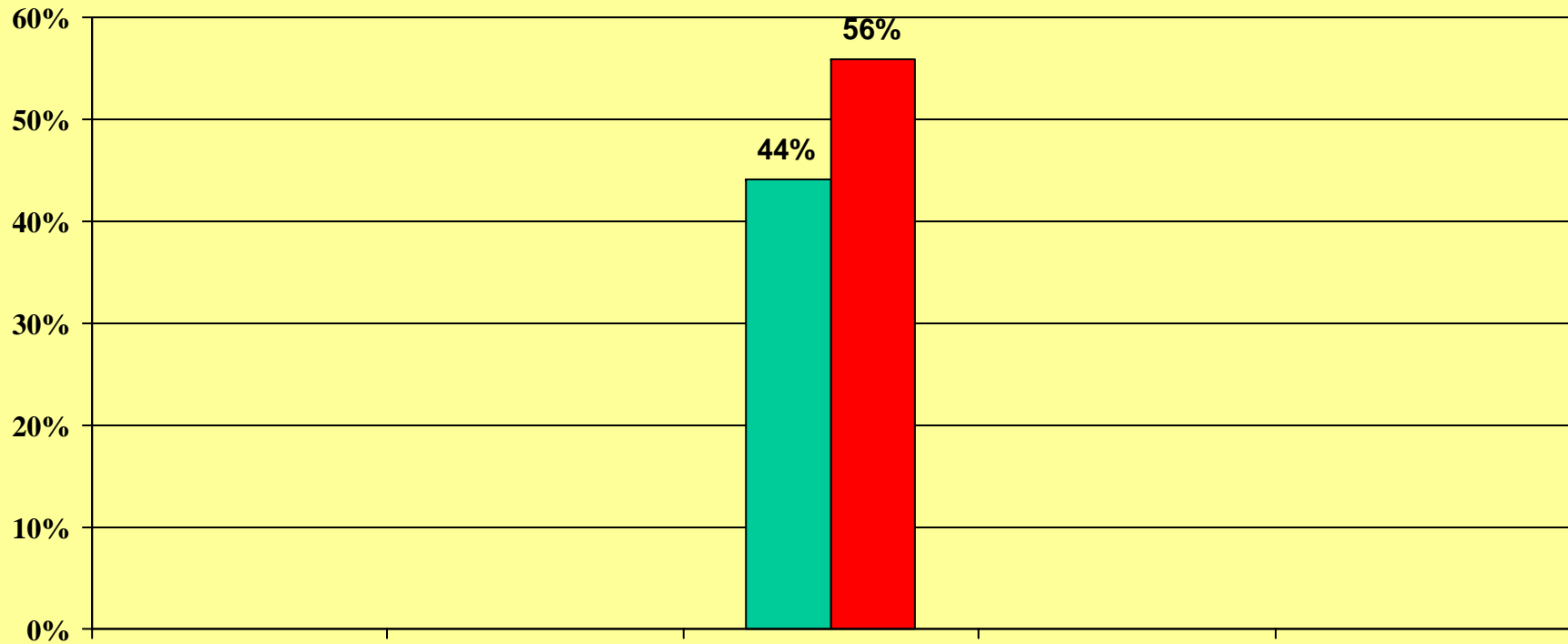


October 2007

■ Caucasian ■ African-american ■ hispanic ■ native american ■ asian ■ other

CIVITAS INSTITUTE

Gender

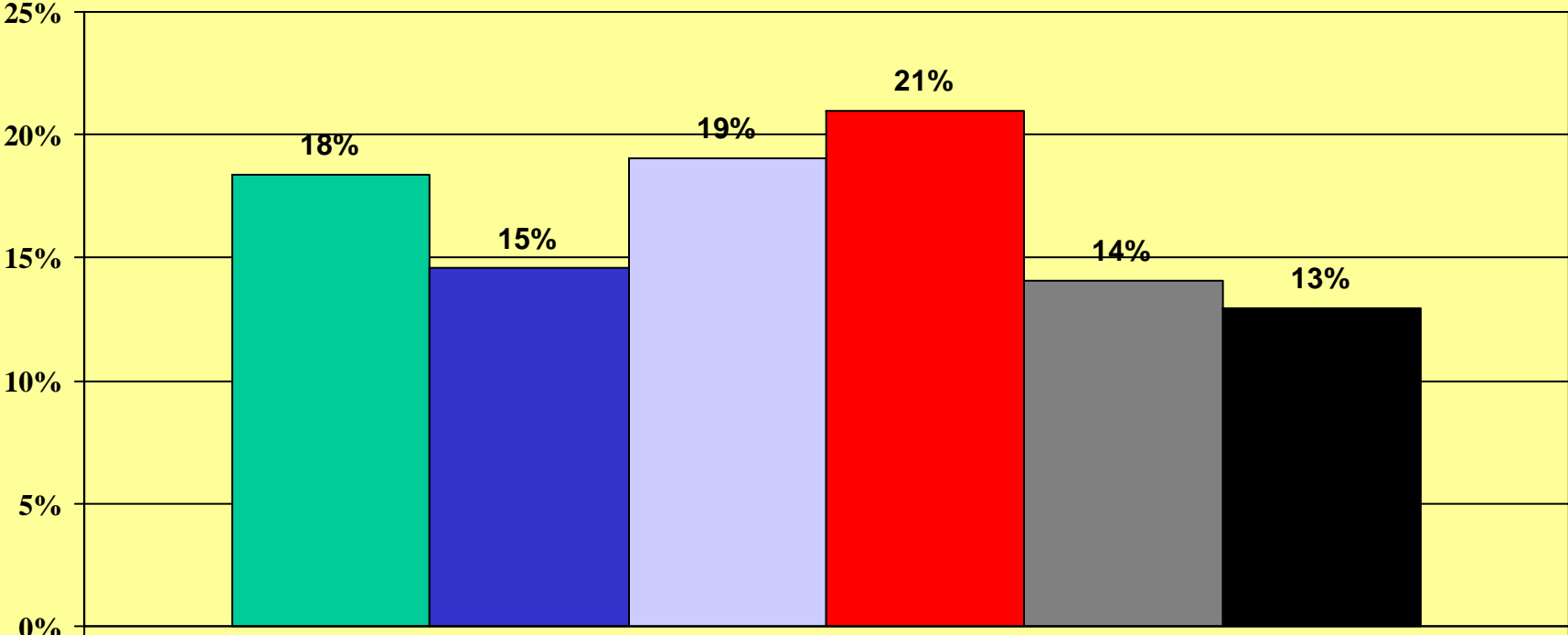


October 2007

Male Female

CIVITAS INSTITUTE

Geographic area



October 2007

■ Charlotte ■ Western ■ Piedmont Triad ■ Triangle ■ Northeast ■ Southeast